

bs-13940R**[Primary Antibody]****CHST9 Rabbit pAb****BioSS**
ANTIBODIES

www.bioss.com.cn

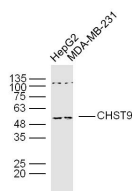
sales@bioss.com.cn

techsupport@bioss.com.cn

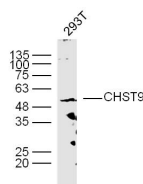
400-901-9800

— DATASHEET —

Host: Rabbit	Isotype: IgG	Applications: WB (1:500-2000)
Clonality: Polyclonal		Reactivity: Human (predicted: Mouse, Rabbit, Horse)
GeneID: 83539	SWISS: Q7L1S5	
Target: CHST9		Predicted MW.: 52 kDa
Immunogen: KLH conjugated synthetic peptide derived from human CHST9: 351-443/443.		Subcellular Location: Cytoplasm
Purification: affinity purified by Protein A		
Concentration: 1mg/ml		
Storage: 0.01M TBS (pH7.4) with 1% BSA, 0.02% Proclin300 and 50% Glycerol. Shipped at 4°C. Store at -20°C for one year. Avoid repeated freeze/thaw cycles.		
Background: The protein encoded by this gene belongs to the sulfotransferase 2 family. It is localized to the golgi membrane, and catalyzes the transfer of sulfate to position 4 of non-reducing N-acetylgalactosamine (GalNAc) residues in both N-glycans and O-glycans. Sulfate groups on carbohydrates confer highly specific functions to glycoproteins, glycolipids, and proteoglycans, and are critical for cell-cell interaction, signal transduction, and embryonic development. Alternatively spliced transcript variants have been described for this gene. [provided by RefSeq, Aug 2011]		

— VALIDATION IMAGES —

Sample: HepG2 (human) Cell Lysate at 40 ug
MDA-MB-231 (human) Cell Lysate at 40 ug
Primary: Anti-CHST9(bs-13940R) at 1/300
dilution Secondary: IRDye800CW Goat Anti-
Rabbit IgG at 1/20000 dilution Predicted band
size: 52 kD Observed band size: 52 kD



Sample: 293T (human) Cell Lysate at 40 ug
Primary: Anti-CHST9(bs-13940R) at 1/300
dilution Secondary: IRDye800CW Goat Anti-
Rabbit IgG at 1/20000 dilution Predicted band
size: 52 kD Observed band size: 52 kD