

bs-13939R**[Primary Antibody]****CHST8 Rabbit pAb****BioSS**
ANTIBODIES

www.bioss.com.cn

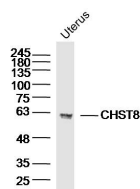
sales@bioss.com.cn

techsupport@bioss.com.cn

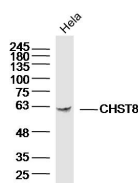
400-901-9800

— DATASHEET —

Host: Rabbit	Isotype: IgG	Applications: WB (1:500-2000)
Clonality: Polyclonal		Reactivity: Human, Mouse (predicted: Rat, Rabbit, Pig, Cow, Horse)
GeneID: 64377	SWISS: Q9H2A9	Predicted MW.: 49 kDa
Target: CHST8		Subcellular Location: Cytoplasm
Immunogen: KLH conjugated synthetic peptide derived from human CHST9: 141-240/424.		
Purification: affinity purified by Protein A		
Concentration: 1mg/ml		
Storage: 0.01M TBS (pH7.4) with 1% BSA, 0.02% Proclin300 and 50% Glycerol. Shipped at 4°C. Store at -20°C for one year. Avoid repeated freeze/thaw cycles.		
Background: The protein encoded by this gene belongs to the sulfotransferase 2 family. It is predominantly expressed in the pituitary gland, and is localized to the golgi membrane. This protein catalyzes the transfer of sulfate to position 4 of non-reducing N-acetylgalactosamine (GalNAc) residues in both N-glycans and O-glycans. It is responsible for sulfation of GalNAc on luteinizing hormone (LH), which is required for production of the sex hormones. Mice lacking this enzyme, exhibit increased levels of circulating LH, and precocious sexual maturation of both male and female mice. Alternatively spliced transcript variants have been found for this gene. [provided by RefSeq, Aug 2011]		

— VALIDATION IMAGES —

Sample: Uterus (Mouse) Lysate at 40 ug
Primary: Anti-CHST8(bs-13939R) at 1/300 dilution
Secondary: IRDye800CW Goat Anti-Rabbit IgG at 1/20000 dilution
Predicted band size: 49kD
Observed band size: 59kD



Sample: HeLa(human) Cell Lysate at 40 ug
Primary: Anti-CHST8(bs-13939R) at 1/300 dilution
Secondary: IRDye800CW Goat Anti-Rabbit IgG at 1/20000 dilution
Predicted band size: 49kD
Observed band size: 59kD