

bs-4198R**[Primary Antibody]****Bioss**
ANTIBODIES

www.bioss.com.cn

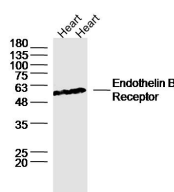
sales@bioss.com.cn

techsupport@bioss.com.cn

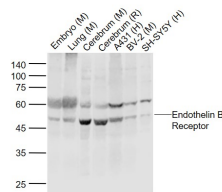
400-901-9800

Endothelin B Receptor Rabbit pAb**DATASHEET**

Host: Rabbit	Isotype: IgG	Applications: WB (1:500-2000)
Clonality: Polyclonal		Reactivity: Human, Mouse, Rat (predicted: Rabbit, Pig, Cow, Chicken, Dog, Horse)
GeneID: 1910	SWISS: P24530	Predicted MW.: 47 kDa
Target: Endothelin B Receptor		Subcellular Location: Cell membrane
Immunogen: KLH conjugated synthetic peptide derived from human Endothelin B Receptor: 378-442/442. < Cytoplasmic >		
Purification: affinity purified by Protein A		
Concentration: 1mg/ml		
Storage: 0.01M TBS (pH7.4) with 1% BSA, 0.02% Proclin300 and 50% Glycerol. Shipped at 4°C. Store at -20°C for one year. Avoid repeated freeze/thaw cycles.		
Background: Endothelin receptor type B (ETRB) is a G protein-coupled receptor that activates a phosphatidylinositol-calcium second messenger system. Its ligand, endothelin, consists of a family of three potent vasoactive peptides: ET1, ET2, and ET3. A splice variant (SVR), differing in the intracellular C terminal domain, has been described for this receptor. Both WT and the variant bind ET1. However, they exhibit different responses upon binding - suggesting that these two variants are functionally distinct.		

VALIDATION IMAGES

Sample: Lane1:Heart (Rat)Lysate at 40 ug
Lane2:Heart (Mouse) Lysate at 40 ug Primary:
Anti-Endothelin B Receptor(bs-4198R)at 1/300
dilution Secondary: IRDye800CW Goat Anti-
RabbitIgG at 1/20000 dilution Predicted band
size: 47kD Observed band size: 50kD



Sample: Lane 1: Embryo (Mouse) Tissue Lysate
at 40 ug Lane 2: Lung (Mouse) TissueLysate at 40
ug Lane 3: Cerebrum (Mouse) Tissue Lysate at 40
ug Lane 4: Cerebrum (Rat) Tissue Lysate at 40 ug
Lane 5: A431 (Human) Cell Lysate at 30 ug Lane
6: BV-2 (Mouse) Cell Lysate at 30 ug Lane 7: SH-
SY5Y (Human) Cell Lysate at 30 ug Primary: Anti-
Endothelin B Receptor (bs-4198R) at 1/500
dilution Secondary: IRDye800CW Goat Anti-
Rabbit IgG at 1/20000 dilution Predicted band
size: 47 kD Observed band size: 50 kD

SELECTED CITATIONS

- **[IF=10.787]** Ravi Kumar. et al. Induction of reactive oxygen species by mechanical stretch drives endothelin production in neonatal pig renal epithelial cells. REDOX BIOL. 2022 Sep;55:102394 WB ;Pig. 35841629
- **[IF=4.757]** Nataliia Hula. et al. The Long-Term Effects of Prenatal Hypoxia on Coronary Artery Function of the Male and Female Offspring. BIOMEDICINES. 2022 Dec;10(12):3019 IF ;Rat. 10.3390/biomedicines10123019
- **[IF=2.107]** Ji L et al. A high affinity nanobody against endothelin receptor type B: a new approach to the treatment of melanoma. Mol Biol Rep. 2020 Mar;47(3):2137-2147. WB ;Human. 32080807
- **[IF=0.939]** Prayitnaningsih et al. Neuropathy optic glaucomatosa induced by systemic hypertension through activation

Important Note: This product as supplied is intended for research use only, not for use in human, therapeutic or diagnostic applications.

endothelin-1 signaling pathway in central retinal artery in rats. (2016) Int.J.Ophthalmol. 9:1568-1577 IF ;Rat. 27990358