

**bs-13937R**

**[ Primary Antibody ]**

## CHST6 Rabbit pAb

**Bioss**  
ANTIBODIES

www.bioss.com.cn

sales@bioss.com.cn

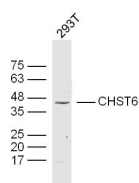
techsupport@bioss.com.cn

400-901-9800

### — DATASHEET —

<b>Host:</b> Rabbit	<b>Isotype:</b> IgG	<b>Applications:</b> WB (1:500-2000)
<b>Clonality:</b> Polyclonal		<b>Reactivity:</b> Human (predicted: Sheep, Cow, Dog, Horse)
<b>GeneID:</b> 4166	<b>SWISS:</b> Q9GZX3	
<b>Target:</b> CHST6		<b>Predicted MW.:</b> 44 kDa
<b>Immunogen:</b> KLH conjugated synthetic peptide derived from human CHST6: 101-200/395.		<b>Subcellular Location:</b> Cytoplasm
<b>Purification:</b> affinity purified by Protein A		
<b>Concentration:</b> 1mg/ml		
<b>Storage:</b> 0.01M TBS (pH7.4) with 1% BSA, 0.02% Proclin300 and 50% Glycerol. Shipped at 4°C. Store at -20°C for one year. Avoid repeated freeze/thaw cycles.		
<b>Background:</b> The protein encoded by this gene is an enzyme that catalyzes the transfer of a sulfate group to the GlcNAc residues of keratan. Keratan sulfate helps maintain corneal transparency. Defects in this gene are a cause of macular corneal dystrophy (MCD). [provided by RefSeq, Jan 2010]		

### — VALIDATION IMAGES —



Sample: 293T (human) Cell Lysate at 40 ug  
Primary: Anti-CHST6(bs-13937R) at 1/300  
dilution Secondary: IRDye800CW Goat Anti-Rabbit IgG at 1/20000 dilution Predicted band size: 44 kD Observed band size: 44 kD