

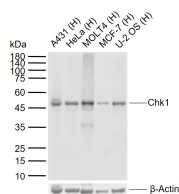
**bsm-60743R****[ Primary Antibody ]****BioSS**  
ANTIBODIES

www.bioss.com.cn

sales@bioss.com.cn

techsupport@bioss.com.cn

400-901-9800

**Chk1 Recombinant Rabbit mAb****— DATASHEET —****Host:** Rabbit**Isotype:** IgG**Clonality:** Recombinant**CloneNo.:** 7D2**GeneID:** 1111**SWISS:** Q14757**Target:** Chk1**Purification:** affinity purified by Protein A**Concentration:** 1mg/ml**Storage:** 50mM Tris-Glycine (pH7.4), 0.15M NaCl, 40% Glycerol, 0.02% Proclin300 and 0.05% BSA.  
Shipped at 4°C. Store at -20°C for one year. Avoid repeated freeze/thaw cycles.**Background:** The protein encoded by this gene belongs to the Ser/Thr protein kinase family. It is required for checkpoint mediated cell cycle arrest in response to DNA damage or the presence of unreplicated DNA. This protein acts to integrate signals from ATM and ATR, two cell cycle proteins involved in DNA damage responses, that also associate with chromatin in meiotic prophase I. Phosphorylation of CDC25A protein phosphatase by this protein is required for cells to delay cell cycle progression in response to double-strand DNA breaks. Several alternatively spliced transcript variants have been found for this gene.[provided by RefSeq, Oct 2011].**Applications:** WB (1:500-1000)**Reactivity:** Human (predicted: Mouse, Rat)**Predicted MW.:** 54 kDa**Subcellular Location:** Cytoplasm ,Nucleus**— VALIDATION IMAGES —**

Sample: Lane 1: Human A431 cell lysates Lane 2: Human HeLa cell lysates Lane 3: Human MOLT4 cell lysates Lane 4: Human MCF-7 cell lysates Lane 5: Human U-2 OS cell lysates Primary: Anti-Chk1 (bsm-60743R) at 1/1000 dilution Secondary: IRDye800CW Goat Anti-Rabbit IgG at 1/20000 dilution Predicted band size: 54 kDa Observed band size: 50 kDa