

**bs-4236R****[ Primary Antibody ]****ADAM17 Rabbit pAb****Bioss**  
**ANTIBODIES**

www.bioss.com.cn

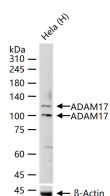
sales@bioss.com.cn

techsupport@bioss.com.cn

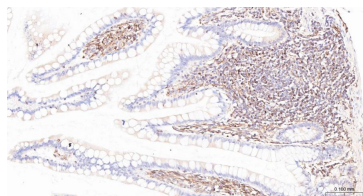
400-901-9800

**— DATASHEET —****Host:** Rabbit**Isotype:** IgG**Clonality:** Polyclonal**GeneID:** 6868**SWISS:** P78536**Target:** ADAM17**Immunogen:** KLH conjugated synthetic peptide derived from human ADAM17: 201-300/824. < Extracellular >**Purification:** affinity purified by Protein A**Concentration:** 1mg/ml**Storage:** 0.01M TBS (pH7.4) with 1% BSA, 0.02% Proclin300 and 50% Glycerol.

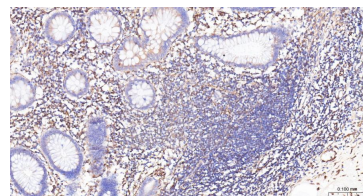
Shipped at 4°C. Store at -20°C for one year. Avoid repeated freeze/thaw cycles.

**Background:** This gene encodes a member of the ADAM (a disintegrin and metalloprotease domain) family. Members of this family are membrane-anchored proteins structurally related to snake venom disintegrins, and have been implicated in a variety of biologic processes involving cell-cell and cell-matrix interactions, including fertilization, muscle development, and neurogenesis. The protein encoded by this gene functions as a tumor necrosis factor- $\alpha$  converting enzyme; binds mitotic arrest deficient 2 protein; and also plays a prominent role in the activation of the Notch signaling pathway. [provided by RefSeq].**Applications:** WB (1:500-2000)**IHC-P** (1:100-500)**IHC-F** (1:100-500)**IF** (1:100-500)**Flow-Cyt** (1 $\mu$ g/Test)**ICC/IF** (1:50-200)**Reactivity:** Human, Mouse, Rat**Predicted MW.:** 68/91 kDa**Subcellular Location:** Cell membrane**— VALIDATION IMAGES —**

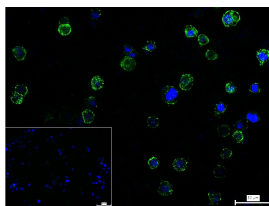
25  $\mu$ g total protein per lane of various lysates (see on figure) probed with ADAM17 polyclonal antibody, unconjugated (bs-4236R) at 1:1000 dilution and 4°C overnight incubation. Followed by conjugated secondary antibody incubation at r.t. for 60 min.



Paraformaldehyde-fixed, paraffin embedded Human Small Intestine; Antigen retrieval by boiling in sodium citrate buffer (pH6.0) for 15 min; Antibody incubation with ADAM17 Polyclonal Antibody, Unconjugated (bs-4236R) at 1:200 overnight at 4°C, followed by conjugation to the bs-0295G-HRP and DAB (C-0010) staining.



Paraformaldehyde-fixed, paraffin embedded Human Colon; Antigen retrieval by boiling in sodium citrate buffer (pH6.0) for 15 min; Antibody incubation with ADAM17 Polyclonal Antibody, Unconjugated (bs-4236R) at 1:200 overnight at 4°C, followed by conjugation to the bs-0295G-HRP and DAB (C-0010) staining.



4% Paraformaldehyde-fixed Raji (H) cell; Antibody incubation with (ADAM17) polyclonal Antibody, unconjugated (bs-4236R) 1:100, 90 min at 37°C; followed by conjugated Goat Anti-Rabbit IgG antibody (green, bs-40295G-FITC) at 37°C for 90 min, DAPI (blue, C02-04002) was used to stain the cell nuclei. PBS instead of the

Important Note: This product as supplied is intended for research use only, not for use in human, therapeutic or diagnostic applications.

primary antibody was used as the blank control.

## — SELECTED CITATIONS —

---

- **[IF=6.961]** Chan Yen-Ju. et al. Blue light exposure collapses the inner blood-retinal barrier by accelerating endothelial CLDN5 degradation through the disturbance of GNAZ and the activation of ADAM17. FLUIDS BARRIERS CNS. 2023 Dec;20(1):1-16 WB ;Human,Mouse. 37095509
- **[IF=4.757]** Maria Consiglia Trotta. et al. Oral Administration of Vitamin D3 Prevents Corneal Damage in a Knock-Out Mouse Model of Sjögren's Syndrome. BIOMEDICINES. 2023 Feb;11(2):616 IF ;MOUSE. 36831152
- **[IF=4.379]** Xiao, Wenyan. et al. Robo4 is constitutively shed by ADAMs from endothelial cells and the shed Robo4 functions to inhibit Slit3-induced angiogenesis. Sci Rep-Uk. 2022 Mar;12(1):1-14 IF ;MOUSE. 35288626
- **[IF=2.7]** Jiaming Li. et al. ADAM17 promotes colorectal cancer migration and invasion by regulating the TGF- $\beta$ /Smad signaling pathway. TISSUE CELL. 2024 Dec;:102648 IHC,WB ;Human. 39644618
- **[IF=3.449]** Haolu Sun. et al. iRhom1 rescues cognitive dysfunction in multiple sclerosis via preventing myelin injury. Genes Brain Behav. 2021 Nov;20(8):e12771 WB ;Mouse. 34672089