

**bs-5591R****[ Primary Antibody ]****phospho-YES1 (Tyr426) Rabbit pAb****BioSS**  
**ANTIBODIES**

www.bioss.com.cn

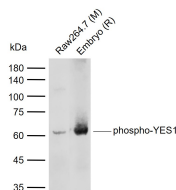
sales@bioss.com.cn

techsupport@bioss.com.cn

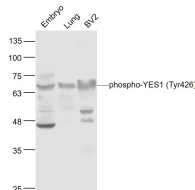
400-901-9800

**— DATASHEET —**

<b>Host:</b> Rabbit	<b>Isotype:</b> IgG	<b>Applications:</b> WB (1:500-2000)
<b>Clonality:</b> Polyclonal		<b>Reactivity:</b> Human, Mouse, Rat (predicted: Rabbit, Pig, Cow, Chicken, Dog, GuineaPig)
<b>GeneID:</b> 7525	<b>SWISS:</b> P07947	<b>Predicted MW.:</b> 60 kDa
<b>Target:</b> phospho-YES1 (Tyr426)		<b>Subcellular Location:</b> Cell membrane ,Cytoplasm
<b>Immunogen:</b> KLH conjugated Synthesised phosphopeptide derived from human YES1 around the phosphorylation site of Tyr426: NE(p-Y)TA.		
<b>Purification:</b> affinity purified by Protein A		
<b>Concentration:</b> 1mg/ml		
<b>Storage:</b> 0.01M TBS (pH7.4) with 1% BSA, 0.02% Proclin300 and 50% Glycerol. Shipped at 4°C. Store at -20°C for one year. Avoid repeated freeze/thaw cycles.		
<b>Background:</b> This gene is the cellular homolog of the Yamaguchi sarcoma virus oncogene. The encoded protein has tyrosine kinase activity and belongs to the src family of proteins. This gene lies in close proximity to thymidylate synthase gene on chromosome 18, and a corresponding pseudogene has been found on chromosome 22. [provided by RefSeq].		

**— VALIDATION IMAGES —**

Sample: Lane 1: Mouse Raw264.7 cell lysates  
Lane 2: Rat Embryo tissue lysates  
Primary: Anti-phospho-YES1 (Tyr426) (bs-5591R) at 1/1000 dilution  
Secondary: IRDye800CW Goat Anti-Rabbit IgG at 1/20000 dilution  
Predicted band size: 60 kDa  
Observed band size: 60 kDa



Sample: Embryo (Mouse) Lysate at 40 ug  
Lung (Mouse) Lysate at 40 ug  
BV2 (Human) Cell Lysate at 30 ug  
Primary: Anti-phospho-YES1 (Tyr426) (bs-5591R) at 1/300 dilution  
Secondary: IRDye800CW Goat Anti-Rabbit IgG at 1/20000 dilution  
Predicted band size: 60 kD  
Observed band size: 65 kD