
GM-CSFR alpha Rabbit pAb

Catalog Number: bs-10078R

Target Protein: GM-CSFR alpha

Concentration: 1mg/ml

Form: Liquid

Host: Rabbit

Clonality: Polyclonal

Isotype: IgG

Applications: WB (1:500-2000)

Reactivity: Human, Mouse (predicted: Cow, Dog, Horse)

Predicted MW: 42 kDa

Subcellular: Secreted, Cell membrane

Locations:

Entrez Gene: 1438

Swiss Prot: P15509

Source: KLH conjugated synthetic peptide derived from human GM-CSFR alpha: 101-200/400.

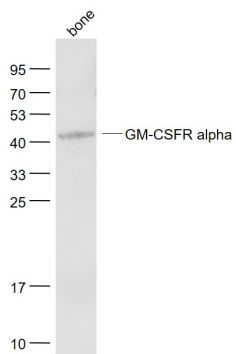
Purification: affinity purified by Protein A

Storage: 0.01M TBS (pH7.4) with 1% BSA, 0.02% Proclin300 and 50% Glycerol.

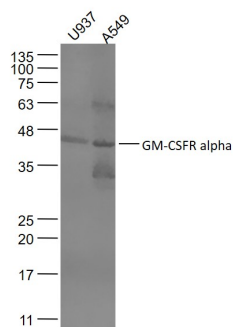
Shipped at 4°C. Store at -20°C for one year. Avoid repeated freeze/thaw cycles.

Background: The protein encoded by this gene is the alpha subunit of the heterodimeric receptor for colony stimulating factor 2, a cytokine which controls the production, differentiation, and function of granulocytes and macrophages. The encoded protein is a member of the cytokine family of receptors. This gene is found in the pseudoautosomal region (PAR) of the X and Y chromosomes. Multiple transcript variants encoding different isoforms have been found for this gene, with some of the isoforms being membrane-bound and others being soluble. [provided by RefSeq].

VALIDATION IMAGES



Sample: Bone (Mouse) Lysate at 40 ug Primary: Anti- GM-CSFR alpha (bs-10078R) at 1/1000 dilution
 Secondary: IRDye800CW Goat Anti-Rabbit IgG at 1/20000 dilution Predicted band size: 42 kD Observed band size: 42 kD



Sample: U937(Human) Cell Lysate at 30 ug A549 (Human) Cell Lysate at 30 ug Primary: Anti- GM-CSFR alpha (bs-10078R) at 1/1000 dilution Secondary: IRDye800CW Goat Anti-Rabbit IgG at 1/20000 dilution Predicted band size: 42 kD Observed band size: 42 kD