

bs-4249R**[Primary Antibody]****P2X3 Rabbit pAb****BioSS**
ANTIBODIES

www.bioss.com.cn

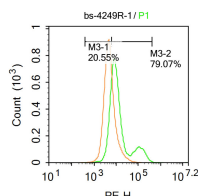
sales@bioss.com.cn

techsupport@bioss.com.cn

400-901-9800

— DATASHEET —

Host: Rabbit	Isotype: IgG	Applications: Flow-Cyt (1ug/test)
Clonality: Polyclonal		Reactivity: Human (predicted: Mouse, Rat, Rabbit, Pig, Horse)
GeneID: 5024	SWISS: P56373	
Target: P2X3		
Immunogen: KLH conjugated synthetic peptide derived from human P2X3: 241-340/397.		Predicted MW.: 44 kDa
Purification: affinity purified by Protein A		Subcellular Location: Cell membrane
Concentration: 1mg/ml		
Storage: 0.01M TBS (pH7.4) with 1% BSA, 0.02% Proclin300 and 50% Glycerol. Shipped at 4°C. Store at -20°C for one year. Avoid repeated freeze/thaw cycles.		
Background: P2RX3 is a member of the family of purinoceptors for ATP. This receptor functions as a ligand-gated ion channel and transduces ATP-evoked nociceptor activation. P2RX3 is important for peripheral pain responses, and controls urinary bladder volume reflexes.		

— VALIDATION IMAGES —

Blank control: U87MG. Primary Antibody (green line): Rabbit Anti-P2X3 antibody (bs-4249R)
Dilution: 1µg /10⁶ cells; Isotype Control Antibody (orange line): Rabbit IgG . Secondary Antibody : Goat anti-rabbit IgG-PE Dilution: 1µg /test. The cells were incubated in 5%BSA to block non-specific protein-protein interactions for 30 min at room temperature .Cells stained with Primary Antibody for 30 min at room temperature. The secondary antibody used for 40 min at room temperature. Acquisition of 20,000 events was performed.

— SELECTED CITATIONS —

- **[IF=2.9]** Ye-qian Liu. et al. Mechanism and Pharmacodynamic Substance Basis of Raw and Wine-Processed Evodia rutaecarpa on Smooth Muscle Cells of Dysmenorrhea Mice. PAIN RES MANAG. 2023;2023:7711988 IF ;Mouse. 37305097
- **[IF=2.7]** Mi-Mi Wan. et al. Electroacupuncture Alleviates Dry Eye Ocular Pain Through TNF-α Mediated ERK1/2/P2X3R Signaling Pathway in SD Rats. J PAIN RES. 2023 Dec 31 IF,IHC,WB ;Rat. 38107367