

LRRC6 Rabbit pAb

Catalog Number: bs-13613R

Target Protein: LRRC6

Concentration: 1mg/ml

Form: Liquid

Host: Rabbit

Clonality: Polyclonal

Isotype: IgG

Applications: WB (1:500-2000)

Reactivity: Human, Mouse (predicted:Rat, Pig, Sheep, Cow, Dog, Horse)

Predicted MW: 54 kDa

Entrez Gene: 23639

Swiss Prot: Q86X45

Source: KLH conjugated synthetic peptide derived from human LRRC6: 201-300/466.

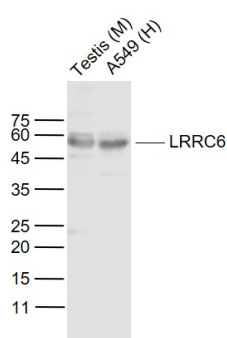
Purification: affinity purified by Protein A

Storage: 0.01M TBS (pH7.4) with 1% BSA, 0.02% Proclin300 and 50% Glycerol.

Shipped at 4°C. Store at -20°C for one year. Avoid repeated freeze/thaw cycles.

Background: The leucine-rich repeat-containing protein 6 (LRRC6), also designated Leucine-rich testis-specific protein (LRTP), is a 466 amino acid protein that contains 3 LRR repeats and plays a role in spermatogenesis. The gene encoding LRRC6 maps to chromosome 8, which encodes approximately 800 genes. Translocation of portions of chromosome 8 with amplifications of the c-Myc gene are found in some leukemias and lymphomas, and typically associated with a poor prognosis. Chromosome 8 is also associated with Trisomy 8, Pfeiffer syndrome, congenital hypothyroidism and Waardenburg syndrome.

VALIDATION IMAGES



Sample: Lane 1: Testis (Mouse) Lysate at 40 ug Lane 2: A549 (Human) Cell Lysate at 30 ug Primary: Anti-LRRC6 (bs-13613R) at 1/300 dilution Secondary: IRDye800CW Goat Anti-Rabbit IgG at 1/20000 dilution
Predicted band size: 54 kD Observed band size: 54 kD