
CATSPERB Rabbit pAb

Catalog Number: bs-13607R

Target Protein: CATSPERB

Concentration: 1mg/ml

Form: Liquid

Host: Rabbit

Clonality: Polyclonal

Isotype: IgG

Applications: WB (1:500-2000)

Reactivity: Mouse (predicted:Human, Rat, Dog)

Predicted MW: 127 kDa

Entrez Gene: 79820

Swiss Prot: Q9H7T0

Source: KLH conjugated synthetic peptide derived from human CATSPERB: 851-950/1116.

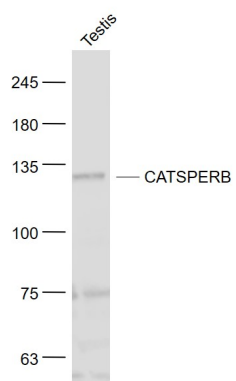
Purification: affinity purified by Protein A

Storage: 0.01M TBS (pH7.4) with 1% BSA, 0.02% Proclin300 and 50% Glycerol.

Shipped at 4°C. Store at -20°C for one year. Avoid repeated freeze/thaw cycles.

Background: CatSper proteins are ion transport proteins located on the surface of sperm cells in the principal piece of the sperm tail. CatSper proteins are vital to sperm motility, fertilization and cAMP-mediated calcium influx in sperm. There are four CatSper proteins in mammalian sperm, namely CatSper (or CatSper1), CatSper2, CatSper3 and CatSper4. CatSper proteins are believed to assemble into a heterotetrameric complex, forming an alkalinization-activated Ca²⁺-selective channel. CatSper β is a multipass membrane protein that functions as an auxiliary protein of the CatSper channel. It contains a large extracellular domain and a number of N-glycosylation sites. CatSper β specifically interacts with CatSper1 and through this interaction plays an important role in the hyperactivated motility of sperm cells, a process that is required in the preparation of sperm for fertilization.

VALIDATION IMAGES



Sample: Testis (Mouse) Lysate at 40 ug Primary: Anti- CATSPERB (bs-13607R) at 1/1000 dilution Secondary: IRDye800CW Goat Anti-Rabbit IgG at 1/20000 dilution Predicted band size: 127 kD Observed band size: 127 kD