

bs-11660R**[Primary Antibody]****Gbx1 Rabbit pAb****BioSS**
ANTIBODIES

www.bioss.com.cn

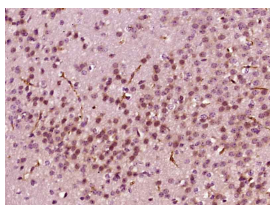
sales@bioss.com.cn

techsupport@bioss.com.cn

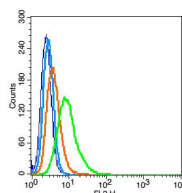
400-901-9800

— DATASHEET —

Host: Rabbit	Isotype: IgG	Applications: IHC-P (1:100-500) IHC-F (1:100-500) IF (1:100-500) Flow-Cyt (1µg/Test)
Clonality: Polyclonal		
GeneID: 2636	SWISS: Q14549	
Target: Gbx1		
Immunogen: KLH conjugated synthetic peptide derived from human Gbx1: 201-300/363.		
Purification: affinity purified by Protein A		
Concentration: 1mg/ml		Reactivity: Mouse, Rat (predicted: Human, Rabbit, Pig, Sheep, Chicken, Dog, Fruit Fly, Chimpanzee)
Storage: 0.01M TBS (pH7.4) with 1% BSA, 0.02% Proclin300 and 50% Glycerol. Shipped at 4°C. Store at -20°C for one year. Avoid repeated freeze/thaw cycles.		Predicted MW.: 38 kDa
Background: The homeobox is DNA sequence that is approximately 180 base pairs long that is involved in all steps of the developmental regulation of animals, fungi and plants, from embryogenesis to cell differentiation. The homeobox encodes a protein domain of about 60 amino acids, called the homeodomain, that can bind to DNA. The gastrulation brain homeobox 1 (GBX1) gene, along with another homeobox gene (EN2), maps to chromosome 7q36, and is expressed in septal and pallidal areas and in the basal forebrain cholinergic system, an area implicated in Alzheimer's disease. The GBX1 gene encodes the GBX1 protein, which localizes to the nucleus and contains 1 homeobox DNA-binding domain.		Subcellular Location: Nucleus

— VALIDATION IMAGES —

Paraformaldehyde-fixed, paraffin embedded (Mouse brain); Antigen retrieval by boiling in sodium citrate buffer (pH6.0) for 15min; Block endogenous peroxidase by 3% hydrogen peroxide for 20 minutes; Blocking buffer (normal goat serum) at 37°C for 30min; Antibody incubation with (Gbx1) Polyclonal Antibody, Unconjugated (bs-11660R) at 1:400 overnight at 4°C, followed by operating according to SP Kit(Rabbit) (sp-0023) instructions and DAB staining.



Blank control(blue): RSC96(fixed with 2% paraformaldehyde (10 min) and then permeabilized with ice-cold 90% methanol for 30 min on ice). Primary Antibody: Rabbit Anti-Gbx1 antibody(bs-11660R), Dilution: 1µg in 100 µL 1X PBS containing 0.5% BSA; Isotype Control Antibody: Rabbit IgG(orange), used under the same conditions; Secondary Antibody: Goat anti-rabbit IgG-PE(white blue), Dilution: 1:200 in 1 X PBS containing 0.5% BSA.