

bs-4228R

[Primary Antibody]

BioSS[™]
ANTIBODIES

www.bioss.com.cn

sales@bioss.com.cn

techsupport@bioss.com.cn

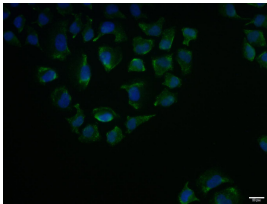
400-901-9800

VLDL Receptor Rabbit pAb

— DATASHEET —

Host: Rabbit	Isotype: IgG	Applications: ICC/IF (1:100) Reactivity: Human Predicted MW.: 93 kDa Subcellular Location: Cell membrane
Clonality: Polyclonal		
GeneID: 7436	SWISS: P98155	
Target: VLDL Receptor		
Immunogen: KLH conjugated synthetic peptide derived from human VLDL Receptor: 551-650/873.		
Purification: affinity purified by Protein A		
Concentration: 1mg/ml		
Storage: 0.01M TBS (pH7.4) with 1% BSA, 0.02% Proclin300 and 50% Glycerol. Shipped at 4°C. Store at -20°C for one year. Avoid repeated freeze/thaw cycles.		
Background: VLDL (very low density lipoprotein) cholesterol is one of the three major types of cholesterol found in blood. VLDL receptor plays an essential role in triglyceride metabolism. It binds VLDL and transports it into cells by endocytosis. In order to be internalized, the receptor-ligand complexes must first cluster into clathrin coated pits. Binding to Reelin induces tyrosine phosphorylation of Dab1 and modulation of Tau phosphorylation.		

— VALIDATION IMAGES —



HeLa cell; 4% Paraformaldehyde-fixed; Triton X-100 at room temperature for 20 min; Blocking buffer (normal goat serum, C-0005) at 37°C for 20 min; Antibody incubation with (VLDL Receptor) polyclonal Antibody, Unconjugated (bs-4228R) 1:100, 90 minutes at 37°C; followed by a conjugated Goat Anti-Rabbit IgG antibody at 37°C for 90 minutes, DAPI (blue, C02-04002) was used to stain the cell nuclei.