

bs-9467R**[Primary Antibody]****Dishevelled 3 Rabbit pAb****Bioss**
ANTIBODIES

www.bioss.com.cn

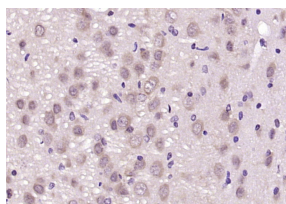
sales@bioss.com.cn

techsupport@bioss.com.cn

400-901-9800

— DATASHEET —

Host: Rabbit	Isotype: IgG	Applications: IHC-P (1:100-500) IHC-F (1:100-500) IF (1:100-500)
Clonality: Polyclonal		
GeneID: 1857	SWISS: Q92997	
Target: Dishevelled 3		Reactivity: Rat (predicted: Human, Mouse, Pig, Sheep, Cow, Chicken, Dog)
Immunogen: KLH conjugated synthetic peptide derived from human Dishevelled 3/DVL3: 401-500/716.		
Purification: affinity purified by Protein A		Predicted MW.: 78 kDa
Concentration: 1mg/ml		Subcellular Location: Cytoplasm
Storage: 0.01M TBS (pH7.4) with 1% BSA, 0.02% Proclin300 and 50% Glycerol. Shipped at 4°C. Store at -20°C for one year. Avoid repeated freeze/thaw cycles.		
Background: Mammalian homologs of the Drosophila dishevelled (Dsh) gene have been identified, including Dvl-1, Dvl-2 and Dvl-3. The mammalian dishevelled proteins contain three homologous domains, two of which are unrelated to any other known protein. The third region is homologous to the discs-large homology domain of Drosophila discs-large-1, a tumor suppressor protein. Like their Drosophila counterpart, the dishevelled proteins are thought to be involved in embryogenesis. Overexpression of Dvl-1 has been shown to inhibit the phosphorylation of tau by GSK-3b. This finding may prove to be important in Alzheimer's studies, which have shown that tau is hyperphosphorylated. In Drosophila, Dsh is a component of the frizzled signaling pathway. Both mammalian dishevelled and frizzled proteins are components of the Wnt signalling pathway.		

— VALIDATION IMAGES —

Paraformaldehyde-fixed, paraffin embedded (rat brain); Antigen retrieval by boiling in sodium citrate buffer (pH6.0) for 15min; Block endogenous peroxidase by 3% hydrogen peroxide for 20 minutes; Blocking buffer (normal goat serum) at 37°C for 30min; Antibody incubation with (Dishevelled 3) Polyclonal Antibody, Unconjugated (bs-9467R) at 1:200 overnight at 4°C, followed by operating according to SP Kit(Rabbit) (sp-0023) instructions and DAB staining.