

bs-11645R**[Primary Antibody]****BioSS**
ANTIBODIES

www.bioss.com.cn

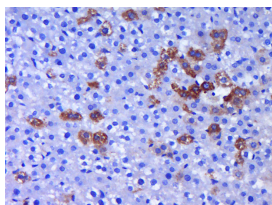
sales@bioss.com.cn

techsupport@bioss.com.cn

400-901-9800

FISH Rabbit pAb**— DATASHEET —**

Host: Rabbit	Isotype: IgG	Applications: IHC-P (1:100-500) IHC-F (1:100-500) IF (1:100-500) Reactivity: Rat (predicted: Human, Mouse) Predicted MW.: 125 kDa Subcellular Location: Cytoplasm
Clonality: Polyclonal		
GeneID: 9644	SWISS: Q5TCZ1	
Target: FISH		
Immunogen: KLH conjugated synthetic peptide derived from human FISH: 261-360/1133.		
Purification: affinity purified by Protein A		
Concentration: 1mg/ml		
Storage: 0.01M TBS (pH7.4) with 1% BSA, 0.02% Proclin300 and 50% Glycerol. Shipped at 4°C. Store at -20°C for one year. Avoid repeated freeze/thaw cycles.		
Background: Fish, a potential Src substrate, is a broadly expressed adaptor protein containing five SH3 domains and a phox homology (PX) domain (1). The Src family of protein tyrosine kinases act in signal transduction pathways (2-4). Src kinases vary in expression but are strongly regulated in vivo; catalytic activity is repressed by interacting with the SH3 domain (5-7). In Src-transformed fibroblasts and in normal cells treated with certain growth factors fish is tyrosine-phosphorylated (1). Treatment of cells with cytochalasin D results in rapid tyrosine phosphorylation of fish, along with activation of Src (1). Fish is likely to be involved in tyrosine kinase signaling and may have a role in cytoskeletal changes (1).		

— VALIDATION IMAGES —

Paraformaldehyde-fixed, paraffin embedded (Rat liver); Antigen retrieval by boiling in sodium citrate buffer (pH6.0) for 15min; Block endogenous peroxidase by 3% hydrogen peroxide for 20 minutes; Blocking buffer (normal goat serum) at 37°C for 30min; Antibody incubation with (FISH) Polyclonal Antibody, Unconjugated (bs-11645R) at 1:400 overnight at 4°C, followed by operating according to SP Kit(Rabbit) (sp-0023) instructions and DAB staining.