

**bs-11643R**

**[ Primary Antibody ]**

## CLACP Rabbit pAb

**Bioss**  
ANTIBODIES

www.bioss.com.cn

sales@bioss.com.cn

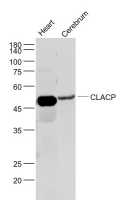
techsupport@bioss.com.cn

400-901-9800

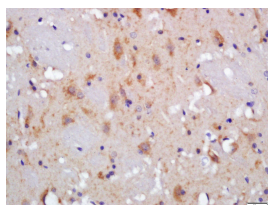
### — DATASHEET —

<b>Host:</b> Rabbit	<b>Isotype:</b> IgG	<b>Applications:</b> <b>WB</b> (1:500-2000) <b>IHC-P</b> (1:100-500) <b>IHC-F</b> (1:100-500) <b>IF</b> (1:100-500)  <b>Reactivity:</b> Mouse, Rat (predicted: Human, Sheep, Cow, Chicken, Dog, Horse)  <b>Predicted MW.:</b> 65 kDa  <b>Subcellular Location:</b> Secreted ,Cell membrane
<b>Clonality:</b> Polyclonal		
<b>GeneID:</b> 84570	<b>SWISS:</b> Q9BXS0	
<b>Target:</b> CLACP		
<b>Immunogen:</b> KLH conjugated synthetic peptide derived from human CLACP: 581-654/654. < Extracellular >		
<b>Purification:</b> affinity purified by Protein A		
<b>Concentration:</b> 1mg/ml		
<b>Storage:</b> 0.01M TBS (pH7.4) with 1% BSA, 0.02% Proclin300 and 50% Glycerol. Shipped at 4°C. Store at -20°C for one year. Avoid repeated freeze/thaw cycles.		
<b>Background:</b> Collagen proteins (products of the COL gene family) are fibrous, extracellular matrix proteins with high tensile strength and are the major components of connective tissue such as tendons and cartilage. All collagens contain a triple helix domain and frequently show lateral self-association in order to form complex connective tissues. The Collagen Type XXV precursor produces the proteolytic fragment CLAC (collagenous Alzheimer amyloid plaque component), which deposits in senile plaques associated with amyloid beta peptides (Abeta) in the brains of patients with Alzheimer's disease. CLAC binds to the fibrillized form of Abeta, which disturbs the structure and function of plasma membranes.		

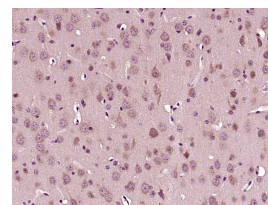
### — VALIDATION IMAGES —



Sample: Heart (Mouse) Lysate at 40 ug Cerebrum (Mouse) Lysate at 40 ug  
Primary: Anti- CLACP (bs-11643R) at 1/1000 dilution  
Secondary: IRDye800CW Goat Anti-Rabbit IgG at 1/20000 dilution  
Predicted band size: 65 kD  
Observed band size: 57 kD



Tissue/cell: rat brain tissue; 4% Paraformaldehyde-fixed and paraffin-embedded; Antigen retrieval: citrate buffer (0.01M, pH 6.0 ), Boiling bathing for 15min; Block endogenous peroxidase by 3% Hydrogen peroxide for 30min; Blocking buffer (normal goat serum, C-0005) at 37°C for 20 min; Incubation: Anti-CLACP Polyclonal Antibody, Unconjugated(bs-11643R) 1:200, overnight at 4°C, followed by conjugation to the secondary antibody(SP-0023) and DAB(C-0010) staining



Paraformaldehyde-fixed, paraffin embedded (Mouse brain); Antigen retrieval by boiling in sodium citrate buffer (pH6.0) for 15min; Block endogenous peroxidase by 3% hydrogen peroxide for 20 minutes; Blocking buffer (normal goat serum) at 37°C for 30min; Antibody incubation with (CLACP) Polyclonal Antibody, Unconjugated (bs-11643R) at 1:400 overnight at 4°C, followed by operating according to SP Kit(Rabbit) (sp-0023) instructions and DAB staining.