

bs-12809R**[Primary Antibody]****ZNF385B Rabbit pAb****BioSS**
ANTIBODIES

www.bioss.com.cn

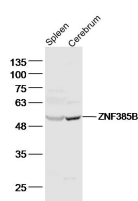
sales@bioss.com.cn

techsupport@bioss.com.cn

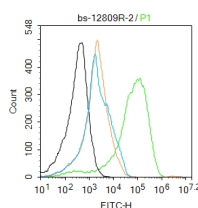
400-901-9800

— DATASHEET —

Host: Rabbit	Isotype: IgG	Applications: WB (1:500-2000) Flow-Cyt (2ug/Test)
Clonality: Polyclonal		
GeneID: 151126	SWISS: Q569K4	Reactivity: Human, Mouse (predicted: Rat, Pig, Sheep, Cow, Dog)
Target: ZNF385B		
Immunogen: KLH conjugated synthetic peptide derived from human ZNF385B: 1-100/471.		
Purification: affinity purified by Protein A		Predicted MW.: 50 kDa
Concentration: 1mg/ml		Subcellular Location: Nucleus
Storage: 0.01M TBS (pH7.4) with 1% BSA, 0.02% Proclin300 and 50% Glycerol. Shipped at 4°C. Store at -20°C for one year. Avoid repeated freeze/thaw cycles.		

— VALIDATION IMAGES —

Sample: Spleen (Mouse) Lysate at 40 ug
Cerebrum (Mouse) Lysate at 40 ug Primary: Anti-
ZNF385B (bs-12809R) at 1/300 dilution
Secondary: IRDye800CW Goat Anti-Rabbit IgG at
1/20000 dilution Predicted band size: 50 kD
Observed band size: 50 kD



Blank control:293T. Primary Antibody (green
line): Rabbit Anti-ZNF385B antibody (bs-12809R)
Dilution: 2µg /10⁶ cells; Isotype Control
Antibody (orange line): Rabbit IgG . Secondary
Antibody : Goat anti-rabbit IgG-AF488 Dilution:
1µg /test. Protocol The cells were fixed with 4%
PFA (10min at room temperature)and then
permeabilized with 90% ice-cold methanol for
20 min at room temperature. The cells were then
incubated in 5%BSA to block non-specific
protein-protein interactions for 30 min at room
temperature .Cells stained with Primary
Antibody for 30 min at room temperature. The
secondary antibody used for 40 min at room
temperature. Acquisition of 20,000 events was
performed.