

bs-12808R

[Primary Antibody]

ZNF37A Rabbit pAb

BioSS
ANTIBODIES

www.bioss.com.cn

sales@bioss.com.cn

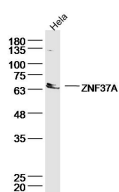
techsupport@bioss.com.cn

400-901-9800

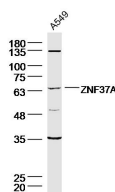
— DATASHEET —

Host: Rabbit	Isotype: IgG	Applications: WB (1:500-2000)
Clonality: Polyclonal		Reactivity: Human
GeneID: 7587	SWISS: P17032	
Target: ZNF37A		
Immunogen: KLH conjugated synthetic peptide derived from human ZNF37A: 81-180/561.		Predicted MW.: 65 kDa
Purification: affinity purified by Protein A		Subcellular Location: Nucleus
Concentration: 1mg/ml		
Storage: 0.01M TBS (pH7.4) with 1% BSA, 0.02% Proclin300 and 50% Glycerol. Shipped at 4°C. Store at -20°C for one year. Avoid repeated freeze/thaw cycles.		

— VALIDATION IMAGES —



Sample: HeLa(human) Cell Lysate at 40 ug
Primary: Anti-ZNF37A (bs-12808R) at 1/300
dilution Secondary: IRDye800CW Goat Anti-
Rabbit IgG at 1/20000 dilution Predicted band
size: 65 kD Observed band size: 65 kD



Sample:A549 (human) Cell Lysate at 40 ug
Primary: Anti-ZNF37A (bs-12808R) at 1/300
dilution Secondary: IRDye800CW Goat Anti-
Rabbit IgG at 1/20000 dilution Predicted band
size: 65 kD Observed band size: 65 kD