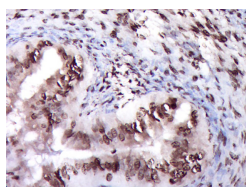


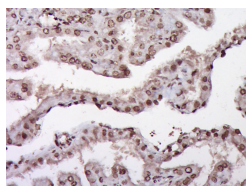
ZNF22 Rabbit pAb

Catalog Number: bs-12803R
Target Protein: ZNF22
Concentration: 1mg/ml
Form: Liquid
Host: Rabbit
Clonality: Polyclonal
Isotype: IgG
Applications: IHC-P (1:100-500), IHC-F (1:100-500), IF (1:100-500)
Reactivity: Mouse, Rat (predicted:Human, Pig, Cow, Dog, Horse)
Predicted MW: 26 kDa
Subcellular Locations: Nucleus
Entrez Gene: 7570
Swiss Prot: P17026
Source: KLH conjugated synthetic peptide derived from human ZNF22: 31-130/224.
Purification: affinity purified by Protein A
Storage: 0.01M TBS (pH7.4) with 1% BSA, 0.02% Proclin300 and 50% Glycerol.
Shipped at 4°C. Store at -20°C for one year. Avoid repeated freeze/thaw cycles.

VALIDATION IMAGES



Paraformaldehyde-fixed, paraffin embedded (Rat ovary); Antigen retrieval by boiling in sodium citrate buffer (pH6.0) for 15min; Block endogenous peroxidase by 3% hydrogen peroxide for 20 minutes; Blocking buffer (normal goat serum) at 37°C for 30min; Antibody incubation with (ZNF22) Polyclonal Antibody, Unconjugated (bs-12803R) at 1:400 overnight at 4°C, followed by operating according to SP Kit(Rabbit) (sp-0023) instructions and DAB staining.



Paraformaldehyde-fixed, paraffin embedded (Mouse placenta); Antigen retrieval by boiling in sodium citrate buffer (pH6.0) for 15min; Block endogenous peroxidase by 3% hydrogen peroxide for 20 minutes; Blocking buffer (normal goat serum) at 37°C for 30min; Antibody incubation with (ZNF22) Polyclonal Antibody, Unconjugated (bs-12803R) at 1:400 overnight at 4°C, followed by operating according to SP Kit(Rabbit) (sp-0023) instructions and DAB staining.