

ZNF207 Rabbit pAb

Catalog Number: bs-12798R

Target Protein: ZNF207

Concentration: 1mg/ml

Form: Liquid

Host: Rabbit

Clonality: Polyclonal

Isotype: IgG

Applications: WB (1:500-2000)

Reactivity: Human, Mouse (predicted:Rat, Rabbit, Pig, Sheep, Cow, Dog, Horse)

Predicted MW: 51 kDa

Subcellular Nucleus

Locations:

Entrez Gene: 7756

Swiss Prot: O43670

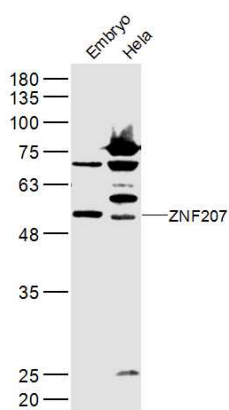
Source: KLH conjugated synthetic peptide derived from human ZNF207: 321-420/478.

Purification: affinity purified by Protein A

Storage: 0.01M TBS (pH7.4) with 1% BSA, 0.02% Proclin300 and 50% Glycerol.

Shipped at 4°C. Store at -20°C for one year. Avoid repeated freeze/thaw cycles.

VALIDATION IMAGES



Sample: Embryo (Mouse) Lysate at 40 ug HeLa (Human) Lysate at 30 ug Primary: Anti-ZNF207 (bs-12798R) at 1/300 dilution Secondary: IRDye800CW Goat Anti-Rabbit IgG at 1/20000 dilution Predicted band size: 51 kD
Observed band size: 51 kD