

bs-7849R**[Primary Antibody]****Beta tubulin cofactor D Rabbit pAb****Bioss**
ANTIBODIES

www.bioss.com.cn

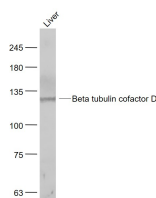
sales@bioss.com.cn

techsupport@bioss.com.cn

400-901-9800

— DATASHEET —

Host: Rabbit	Isotype: IgG	Applications: WB (1:500-2000)
Clonality: Polyclonal		Reactivity: Mouse (predicted: Human, Rat, Rabbit, Chicken)
GeneID: 6904	SWISS: Q9BTW9.2	
Target: Beta tubulin cofactor D		Predicted MW.: 133 kDa
Immunogen: KLH conjugated synthetic peptide derived from human TBCD/Beta tubulin cofactor D: 401-500/1192.		Subcellular Location: Cell membrane ,Cytoplasm
Purification: affinity purified by Protein A		
Concentration: 1mg/ml		
Storage: 0.01M TBS (pH7.4) with 1% BSA, 0.02% Proclin300 and 50% Glycerol. Shipped at 4°C. Store at -20°C for one year. Avoid repeated freeze/thaw cycles.		
Background: Tubulin-folding protein; involved in the first step of the tubulin folding pathway. Modulates microtubule dynamics by capturing GTP-bound beta-tubulin (TUBB). Acts as a GTPase-activating protein (GAP) for ARL2. Its ability to interact with beta tubulin is regulated via its interaction with ARL2. Induces microtubule disruption in absence of ARL2. Increases degradation of beta tubulin, when overexpressed in polarized cells. Promotes epithelial cell detachment, a process antagonized by ARL2. Induces tight adherens and tight junctions disassembly at the lateral cell membrane.		

— VALIDATION IMAGES —

Sample: Liver (Mouse) Lysate at 40 ug Primary:
Anti- Beta tubulin cofactor D (bs-7849R) at
1/1000 dilution Secondary: IRDye800CW Goat
Anti-Rabbit IgG at 1/20000 dilution Predicted
band size: 133 kD Observed band size: 133 kD