

**bs-4219R****[ Primary Antibody ]****TBL1X/SMAP55 Rabbit pAb****Bioss**  
**ANTIBODIES**

www.bioss.com.cn

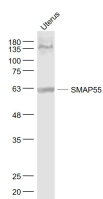
sales@bioss.com.cn

techsupport@bioss.com.cn

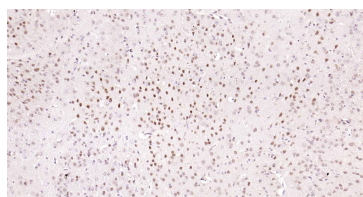
400-901-9800

**— DATASHEET —**

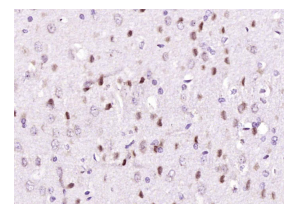
<b>Host:</b> Rabbit	<b>Isotype:</b> IgG	<b>Applications:</b> WB (1:500-2000) <b>IHC-P</b> (1:100-500) <b>IHC-F</b> (1:100-500) <b>IF</b> (1:100-500)  <b>Reactivity:</b> Mouse, Rat (predicted: Human, Rabbit, Cow, Chicken, Dog, Horse)  <b>Predicted MW.:</b> 63 kDa  <b>Subcellular Location:</b> Nucleus
<b>Clonality:</b> Polyclonal		
<b>GeneID:</b> 6907	<b>SWISS:</b> O60907	
<b>Target:</b> TBL1X/SMAP55		
<b>Immunogen:</b> KLH conjugated synthetic peptide derived from human TBL1X: 501-577/577.		
<b>Purification:</b> affinity purified by Protein A		
<b>Concentration:</b> 1mg/ml		
<b>Storage:</b> 0.01M TBS (pH7.4) with 1% BSA, 0.02% Proclin300 and 50% Glycerol. Shipped at 4°C. Store at -20°C for one year. Avoid repeated freeze/thaw cycles.		
<b>Background:</b> The protein encoded by this gene has sequence similarity with members of the WD40 repeat-containing protein family. The WD40 group is a large family of proteins, which appear to have a regulatory function. It is believed that the WD40 repeats mediate protein-protein interactions and members of the family are involved in signal transduction, RNA processing, gene regulation, vesicular trafficking, cytoskeletal assembly and may play a role in the control of cytotypic differentiation. This encoded protein is found as a subunit in corepressor SMRT (silencing mediator for retinoid and thyroid receptors) complex along with histone deacetylase 3 protein. This gene is located adjacent to the ocular albinism gene and it is thought to be involved in the pathogenesis of the ocular albinism with late-onset sensorineural deafness phenotype. Four transcript variants encoding two different isoforms have been found for this gene. This gene is highly similar to the Y chromosome TBL1Y gene. [provided by RefSeq].		

**— VALIDATION IMAGES —**

Sample: Uterus (Mouse) Lysate at 40 ug Primary:  
Anti- SMAP55 (bs-4219R) at 1/1000 dilution  
Secondary: IRDye800CW Goat Anti-Rabbit IgG at  
1/20000 dilution Predicted band size: 63 kD  
Observed band size: 63 kD



Paraformaldehyde-fixed, paraffin embedded  
Mouse Cerebrum ; Antigen retrieval by boiling in  
sodium citrate buffer (pH6.0) for 15 min;  
Antibody incubation with BARD1 Polyclonal  
Antibody, Unconjugated (bs-4219R) at 1:200  
overnight at 4°C, followed by conjugation to the  
SP Kit (Rabbit, SP-0023) and DAB (C-0010)  
staining.



Paraformaldehyde-fixed, paraffin embedded (rat  
brain tissue); Antigen retrieval by boiling in  
sodium citrate buffer (pH6.0) for 15min; Block  
endogenous peroxidase by 3% hydrogen  
peroxide for 20 minutes; Blocking buffer (normal  
goat serum) at 37°C for 30min; Antibody  
incubation with (TBL1X) Polyclonal Antibody,  
Unconjugated (bs-4219R) at 1:400 overnight at  
4°C, followed by operating according to SP  
Kit(Rabbit) (sp-0023) instructions and DAB  
staining.