

**bs-19017R****[ Primary Antibody ]****NAPRT1 Rabbit pAb****Bioss**  
ANTIBODIES

www.bioss.com.cn

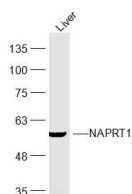
sales@bioss.com.cn

techsupport@bioss.com.cn

400-901-9800

**— DATASHEET —**

<b>Host:</b> Rabbit	<b>Isotype:</b> IgG	<b>Applications:</b> WB (1:500-2000)
<b>Clonality:</b> Polyclonal		
<b>GeneID:</b> 93100	<b>SWISS:</b> Q6XQN6	
<b>Target:</b> NAPRT1		
<b>Immunogen:</b> KLH conjugated synthetic peptide derived from human NAPRT1: 351-450/538.		
<b>Purification:</b> affinity purified by Protein A		
<b>Concentration:</b> 1mg/ml		
<b>Storage:</b> 0.01M TBS (pH7.4) with 1% BSA, 0.02% Proclin300 and 50% Glycerol. Shipped at 4°C. Store at -20°C for one year. Avoid repeated freeze/thaw cycles.		<b>Reactivity:</b> Mouse (predicted: Human, Rabbit, Pig, Sheep, Cow, Dog, Horse)
<b>Background:</b> Nicotinic acid (NA; niacin) is converted by nicotinic acid phosphoribosyltransferase (NAPRT; EC 2.4.2.11) to NA mononucleotide (NaMN), which is then converted to NA adenine dinucleotide (NaAD), and finally to nicotinamide adenine dinucleotide (NAD), which serves as a coenzyme in cellular redox reactions and is an essential component of a variety of processes in cellular metabolism including response to stress (Hara et al., 2007).[supplied by OMIM, Mar 2008]		<b>Predicted MW.:</b> 58 kDa
		<b>Subcellular Location:</b> Cytoplasm

**— VALIDATION IMAGES —**

Sample: Liver (Mouse) Lysate at 40 ug Primary:

Anti-NAPRT1 (bs-19017R) at 1/300 dilution

Secondary: IRDye800CW Goat Anti-Rabbit IgG at

1/20000 dilution Predicted band size: 58 kD

Observed band size: 58 kD