

**bs-19005R**

**[ Primary Antibody ]**

## Naked1 Rabbit pAb

**BioSS**  
ANTIBODIES

www.bioss.com.cn

sales@bioss.com.cn

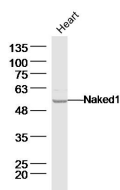
techsupport@bioss.com.cn

400-901-9800

### — DATASHEET —

<b>Host:</b> Rabbit	<b>Isotype:</b> IgG	<b>Applications:</b> WB (1:500-2000)
<b>Clonality:</b> Polyclonal		<b>Reactivity:</b> Mouse (predicted: Human, Rat, Dog, Horse)
<b>GeneID:</b> 85407	<b>SWISS:</b> Q969G9	
<b>Target:</b> Naked1		<b>Predicted MW.:</b> 52 kDa
<b>Immunogen:</b> KLH conjugated synthetic peptide derived from human Naked1: 301-400/470.		<b>Subcellular Location:</b> Cell membrane
<b>Purification:</b> affinity purified by Protein A		
<b>Concentration:</b> 1mg/ml		
<b>Storage:</b> 0.01M TBS (pH7.4) with 1% BSA, 0.02% Proclin300 and 50% Glycerol. Shipped at 4°C. Store at -20°C for one year. Avoid repeated freeze/thaw cycles.		
<b>Background:</b> In the mouse, Nkd is a Dishevelled (see DVL1; MIM 601365)-binding protein that functions as a negative regulator of the Wnt (see WNT1; MIM 164820)-beta-catenin (see MIM 116806)-Tcf (see MIM 602272) signaling pathway.[supplied by OMIM, Jun 2003]		

### — VALIDATION IMAGES —



Sample: Heart (Mouse) Lysate at 40 ug Primary:

Anti-Naked1 (bs-19005R) at 1/300 dilution

Secondary: IRDye800CW Goat Anti-Rabbit IgG at

1/20000 dilution Predicted band size: 52 kD

Observed band size: 52 kD