

IGFBP3 Rabbit pAb

Catalog Number: bs-22862R

Target Protein: IGFBP3

Concentration: 1mg/ml

Form: Liquid

Host: Rabbit

Clonality: Polyclonal

Isotype: IgG

Applications: WB (1:500-2000)

Reactivity: Mouse, Rat (predicted:Human, Pig, Sheep, Cow, Horse)

Predicted MW: 32 kDa

Entrez Gene: 3486

Swiss Prot: P17936

Source: KLH conjugated synthetic peptide derived from human IGFBP3: 131-231/292.

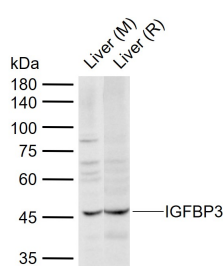
Purification: affinity purified by Protein A

Storage: 0.01M TBS (pH7.4) with 1% BSA, 0.02% Proclin300 and 50% Glycerol.

Shipped at 4°C. Store at -20°C for one year. Avoid repeated freeze/thaw cycles.

Background: This gene is a member of the insulin-like growth factor binding protein (IGFBP) family and encodes a protein with an IGFBP domain and a thyroglobulin type-I domain. The protein forms a ternary complex with insulin-like growth factor acid-labile subunit (IGFALS) and either insulin-like growth factor (IGF) I or II. In this form, it circulates in the plasma, prolonging the half-life of IGFs and altering their interaction with cell surface receptors. Alternate transcriptional splice variants, encoding different isoforms, have been characterized. [provided by RefSeq, Jul 2008]

VALIDATION IMAGES



Sample: Lane 1: Mouse Liver tissue lysates Lane 2: Rat Liver tissue lysates Primary: Anti-IGFBP3 (bs-22862R) at 1/1000 dilution Secondary: IRDye800CW Goat Anti-Rabbit IgG at 1/20000 dilution Predicted band size: 32 kDa Observed band size: 46 kDa

PRODUCT SPECIFIC PUBLICATIONS

[IF=1.7] Wen-Qi Zhang, et al. Regulation of Fuzheng Huayu capsule on inhibiting the fibrosis-associated hepatocellular carcinogenesis. J ASIAN NAT PROD RES. 2024 五月 23 IHC ; Human . 38780602