

bs-19695R**[Primary Antibody]****DLAT Rabbit pAb****BioSS**
ANTIBODIES

www.bioss.com.cn

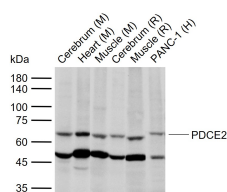
sales@bioss.com.cn

techsupport@bioss.com.cn

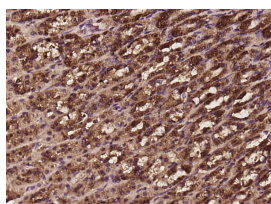
400-901-9800

— DATASHEET —

Host: Rabbit Clonality: Polyclonal GeneID: 1737 Target: DLAT Immunogen: KLH conjugated synthetic peptide derived from human PDCE2: 231-330/647. Purification: affinity purified by Protein A Concentration: 1mg/ml Storage: 0.01M TBS (pH7.4) with 1% BSA, 0.02% Proclin300 and 50% Glycerol. Shipped at 4°C. Store at -20°C for one year. Avoid repeated freeze/thaw cycles. Background: This gene encodes component E2 of the multi-enzyme pyruvate dehydrogenase complex (PDC). PDC resides in the inner mitochondrial membrane and catalyzes the conversion of pyruvate to acetyl coenzyme A. The protein product of this gene, dihydrolipoamide acetyltransferase, accepts acetyl groups formed by the oxidative decarboxylation of pyruvate and transfers them to coenzyme A. Dihydrolipoamide acetyltransferase is the antigen for antimitochondrial antibodies. These autoantibodies are present in nearly 95% of patients with the autoimmune liver disease primary biliary cirrhosis (PBC). In PBC, activated T lymphocytes attack and destroy epithelial cells in the bile duct where this protein is abnormally distributed and overexpressed. PBC eventually leads to cirrhosis and liver failure. Mutations in this gene are also a cause of pyruvate dehydrogenase E2 deficiency which causes primary lactic acidosis in infancy and early childhood.[provided by RefSeq, Oct 2009]	Isotype: IgG SWISS: P10515	Applications: WB (1:500-2000) IHC-P (1:100-500) IHC-F (1:100-500) IF (1:100-500) Reactivity: Human, Mouse, Rat, Zebrafish (predicted: Rabbit, Pig, Sheep, Cow, Dog, Cat, GuineaPig, Horse) Predicted MW.: 63 kDa Subcellular Location: Cytoplasm
--	---	---

— VALIDATION IMAGES —

Sample: Lane 1: Mouse Cerebrum tissue lysates
Lane 2: Mouse Heart tissue lysates Lane 3: Mouse Muscle tissue lysates Lane 4: Rat Cerebrum tissue lysates Lane 5: Rat Muscle tissue lysates
Lane 6: Human PANC-1 cell lysates Primary: Anti-PDCE2 (bs-19695R) at 1/1000 dilution
Secondary: IRDye800CW Goat Anti-Rabbit IgG at 1/20000 dilution Predicted band size: 63 kDa
Observed band size: 63 kDa



Paraformaldehyde-fixed, paraffin embedded (rat stomach tissue); Antigen retrieval by boiling in sodium citrate buffer (pH6.0) for 15min; Block endogenous peroxidase by 3% hydrogen peroxide for 20 minutes; Blocking buffer (normal goat serum) at 37°C for 30min; Antibody incubation with (PDCE2) Polyclonal Antibody, Unconjugated (bs-19695R) at 1:400 overnight at 4°C, followed by operating according to SP Kit(Rabbit) (sp-0023) instructions and DAB staining.

— SELECTED CITATIONS —

- **[IF=12.2]** Shuang Wu. et al. Copper Mediated Follicular Atresia: Implications for Granulosa Cell Death. J HAZARD MATER. 2024 Jul;:135391 IHC ;Mouse. 39106724

Important Note: This product as supplied is intended for research use only, not for use in human, therapeutic or diagnostic applications.