

bs-7834R**[Primary Antibody]****CDCA8 Rabbit pAb****Bioss**
ANTIBODIES

www.bioss.com.cn

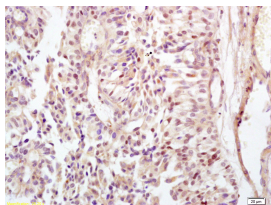
sales@bioss.com.cn

techsupport@bioss.com.cn

400-901-9800

— DATASHEET —

Host: Rabbit	Isotype: IgG	Applications: IHC-P (1:100-500) IHC-F (1:100-500) IF (1:100-500) Reactivity: Human (predicted: Mouse, Rat, Rabbit, Cow, Bee, Horse) Predicted MW.: 31 kDa Subcellular Location: Cytoplasm ,Nucleus
Clonality: Polyclonal		
GeneID: 55143	SWISS: Q53HL2	
Target: CDCA8		
Immunogen: KLH conjugated synthetic peptide derived from human Borealin/CDCA8: 20-120/280.		
Purification: affinity purified by Protein A		
Concentration: 1mg/ml		
Storage: 0.01M TBS (pH7.4) with 1% BSA, 0.02% Proclin300 and 50% Glycerol. Shipped at 4°C. Store at -20°C for one year. Avoid repeated freeze/thaw cycles.		
Background: Component of the chromosomal passenger complex (CPC), a complex that acts as a key regulator of mitosis. The CPC complex has essential functions at the centromere in ensuring correct chromosome alignment and segregation and is required for chromatin-induced microtubule stabilization and spindle assembly. In the complex, it may be required to direct the CPC to centromeric DNA. Major effector of the TTK kinase in the control of attachment-error-correction and chromosome alignment.		

— VALIDATION IMAGES —

Tissue/cell: human endometrium carcinoma; 4% Paraformaldehyde-fixed and paraffin-embedded; Antigen retrieval: citrate buffer (0.01M, pH 6.0), Boiling bathing for 15min; Block endogenous peroxidase by 3% Hydrogen peroxide for 30min; Blocking buffer (normal goat serum, C-0005) at 37°C for 20 min; Incubation: Anti-Borealin/CDCA8 Polyclonal Antibody, Unconjugated(bs-7834R) 1:200, overnight at 4°C, followed by conjugation to the secondary antibody(SP-0023) and DAB(C-0010) staining