

Recombinant human GPR37 protein, C-His (HEK293)

Catalog Number: bs-43568P

Concentration: >1mg/ml

Species: Human

AA Seq: 27-265/613

Predicted MW: 26.3

Tags: C-His

Activity: Not tested

Endotoxin: Not analyzed

Purity: > 90% as determined by SDS-PAGE

Purification: AC

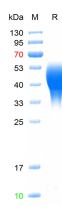
Form: Lyophilized or Liquid

Storage: PBS (pH7.4).

Stored at -70°C or -20°C. Avoid repeated freeze/thaw cycles.

Background: Pael receptor (Pael-R), also known as Parkin-associated endothelin receptor-like receptor, is a putative G protein-coupled transmembrane polypeptide. The gene that encodes Pael-R maps to chromosome 7q31. Pael-R belongs to family 1 of the G protein-coupled receptors and is mainly expressed in the brain. Pael-R interacts with Parkin, the gene product responsible for familial Parkinson's disease.

VALIDATION IMAGES



The purity of the protein is greater than 90% as determined by reducing SDS-PAGE.