

**bs-7831R**

**[ Primary Antibody ]**

## SUGT1 Rabbit pAb

**Bioss**  
ANTIBODIES

www.bioss.com.cn

sales@bioss.com.cn

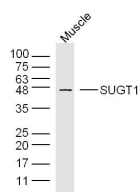
techsupport@bioss.com.cn

400-901-9800

### — DATASHEET —

|  |                      |   |
|--|----------------------|---|
| <b>Host:</b> Rabbit  | <b>Isotype:</b> IgG  | <b>Applications:</b> WB (1:500-2000)  |
| <b>Clonality:</b> Polyclonal   |                      |   |
| <b>GeneID:</b> 10910   | <b>SWISS:</b> Q9Y2Z0 |   |
| <b>Target:</b> SUGT1   |                      |   |
| <b>Immunogen:</b> KLH conjugated synthetic peptide derived from human SUGT1: 271-365/365.  |                      |   |
| <b>Purification:</b> affinity purified by Protein A  |                      | <b>Reactivity:</b> Mouse (predicted: Human, Rat, Rabbit, Pig, Sheep, Cow, Dog, Horse) |
| <b>Concentration:</b> 1mg/ml   |                      | <b>Predicted MW.:</b> 41 kDa  |
| <b>Storage:</b> 0.01M TBS (pH7.4) with 1% BSA, 0.02% Proclin300 and 50% Glycerol.<br>Shipped at 4°C. Store at -20°C for one year. Avoid repeated freeze/thaw cycles.   |                      | <b>Subcellular Location:</b> Cytoplasm ,Nucleus                                       |
| <b>Background:</b> This gene is homologous to the yeast gene SGT1, which encodes a protein involved in kinetochore function and required for the G1/S and G2/M transitions. Complementation studies suggest that the human protein has similar functions. Two transcript variants encoding different isoforms have been found for this gene. [provided by RefSeq, Aug 2008]. |                      |   |

### — VALIDATION IMAGES —



Sample: Muscle (Mouse) Lysate at 40 ug Primary:  
Anti-SUGT1 (bs-7831R) at 1/300 dilution  
Secondary: IRDye800CW Goat Anti-Rabbit IgG at  
1/20000 dilution Predicted band size: 41 kD  
Observed band size: 45 kD