

bs-13912R**[Primary Antibody]****CHML Rabbit pAb****BioSS**
ANTIBODIES

www.bioss.com.cn

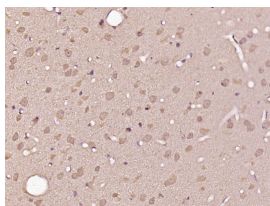
sales@bioss.com.cn

techsupport@bioss.com.cn

400-901-9800

— DATASHEET —

Host: Rabbit	Isotype: IgG	Applications: IHC-P (1:100-500) IHC-F (1:100-500) IF (1:100-500) Reactivity: Rat (predicted: Human, Mouse) Predicted MW.: 74 kDa Subcellular Location: Cytoplasm
Clonality: Polyclonal		
GeneID: 1122	SWISS: P26374	
Target: CHML		
Immunogen: KLH conjugated synthetic peptide derived from human CHML: 51-150/656.		
Purification: affinity purified by Protein A		
Concentration: 1mg/ml		
Storage: 0.01M TBS (pH7.4) with 1% BSA, 0.02% Proclin300 and 50% Glycerol. Shipped at 4°C. Store at -20°C for one year. Avoid repeated freeze/thaw cycles.		
Background: The product of the CHML gene supports geranylgeranylation of most Rab proteins and may substitute for REP-1 in tissues other than retina. CHML is localized close to the gene for Usher syndrome type II. [provided by RefSeq, Jul 2008]		

— VALIDATION IMAGES —

Paraformaldehyde-fixed, paraffin embedded (Rat brain); Antigen retrieval by boiling in sodium citrate buffer (pH6.0) for 15min; Block endogenous peroxidase by 3% hydrogen peroxide for 20 minutes; Blocking buffer (normal goat serum) at 37°C for 30min; Antibody incubation with (CHML) Polyclonal Antibody, Unconjugated (bs-13912R) at 1:400 overnight at 4°C, followed by operating according to SP Kit(Rabbit) (sp-0023) instructions and DAB staining.