

bs-21901R**[Primary Antibody]****Neurexin 2 Rabbit pAb****BioSS**
ANTIBODIES

www.bioss.com.cn

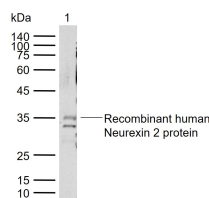
sales@bioss.com.cn

techsupport@bioss.com.cn

400-901-9800

— DATASHEET —

Host: Rabbit	Isotype: IgG	Applications: WB (1:500-2000)
Clonality: Polyclonal		Reactivity: Human (predicted: Mouse, Rat, Dog, Horse)
GeneID: 9379	SWISS: Q9P2S2	
Target: Neurexin 2		Predicted MW.: 182 kDa
Immunogen: KLH conjugated synthetic peptide derived from human Neurexin 2: 231-330/1712. < Extracellular >		Subcellular Location: Cell membrane
Purification: affinity purified by Protein A		
Concentration: 1mg/ml		
Storage: 0.01M TBS (pH7.4) with 1% BSA, 0.02% Proclin300 and 50% Glycerol. Shipped at 4°C. Store at -20°C for one year. Avoid repeated freeze/thaw cycles.		
Background: This gene encodes a member of the neurexin gene family. The products of these genes function as cell adhesion molecules and receptors in the vertebrate nervous system. These genes utilize two promoters. The majority of transcripts are produced from the upstream promoter and encode alpha-neurexin isoforms while a smaller number of transcripts are produced from the downstream promoter and encode beta-neuresin isoforms. The alpha-neurexins contain epidermal growth factor-like (EGF-like) sequences and laminin G domains, and have been shown to interact with neurexophilins. The beta-neurexins lack EGF-like sequences and contain fewer laminin G domains than alpha-neurexins. Alternative splicing and the use of alternative promoters may generate thousands of transcript variants (PMID: 12036300, PMID: 11944992).[provided by RefSeq, Jun 2010]		

— VALIDATION IMAGES —

Sample: Lane 1: Recombinant human Neurexin 2 protein, C-His(bs-42076P) Primary: Anti-Neurexin 2 (bs-21901R) at 1/1000 dilution Secondary: IRDye800CW Goat Anti-Rabbit IgG at 1/20000 dilution Predicted band size: 182 kDa Observed band size: 35 kDa