

**bs-6686R****[ Primary Antibody ]****Bioss**  
ANTIBODIES

www.bioss.com.cn

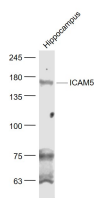
sales@bioss.com.cn

techsupport@bioss.com.cn

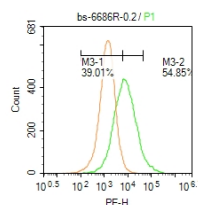
400-901-9800

**ICAM5 Rabbit pAb****— DATASHEET —**

<b>Host:</b> Rabbit	<b>Isotype:</b> IgG	<b>Applications:</b> WB (1:500-2000) <b>Flow-Cyt</b> (0.2ug/test)
<b>Clonality:</b> Polyclonal		<b>Reactivity:</b> Human, Mouse (predicted: Rat, Pig, Cow)
<b>GeneID:</b> 7087	<b>SWISS:</b> Q9UMF0	
<b>Target:</b> ICAM5		<b>Predicted MW.:</b> 97 kDa
<b>Immunogen:</b> KLH conjugated synthetic peptide derived from human ICAM5: 501-600/924. < Extracellular >		<b>Subcellular Location:</b> Cell membrane
<b>Purification:</b> affinity purified by Protein A		
<b>Concentration:</b> 1mg/ml		
<b>Storage:</b> 0.01M TBS (pH7.4) with 1% BSA, 0.02% Proclin300 and 50% Glycerol. Shipped at 4°C. Store at -20°C for one year. Avoid repeated freeze/thaw cycles.		
<b>Background:</b> ICAM5 is a member of the intercellular adhesion molecule (ICAM) family. All ICAM proteins are type I transmembrane glycoproteins, contain 2-9 immunoglobulin-like C2-type domains, and bind to the leukocyte adhesion LFA-1 protein. This protein is expressed on the surface of telencephalic neurons and displays two types of adhesion activity, homophilic binding between neurons and heterophilic binding between neurons and leukocytes. It may be a critical component in neuron-microglial cell interactions in the course of normal development or as part of neurodegenerative diseases.		

**— VALIDATION IMAGES —**

Sample: Hippocampus (Mouse) Lysate at 40 ug  
 Primary: Anti- ICAM5 (bs-6686R) at 1/1000  
 dilution Secondary: IRDye800CW Goat Anti-  
 Rabbit IgG at 1/20000 dilution Predicted band  
 size: 97 kD Observed band size: 167 kD



Blank control: HeLa. Primary Antibody (green line): Rabbit Anti-ICAM5 antibody (bs-6686R)  
 Dilution: 1µg /10<sup>6</sup> cells; Isotype Control Antibody (orange line): Rabbit IgG . Secondary Antibody : Goat anti-rabbit IgG-PE Dilution: 0.2µg /test. Protocol The cells were incubated in 5 %BSA to block non-specific protein-protein interactions for 30 min at at room temperature .Cells stained with Primary Antibody for 30 min at room temperature. The secondary antibody used for 40 min at room temperature. Acquisition of 20,000 events was performed.