

SCN11A Rabbit pAb

Catalog Number: bs-6684R

Target Protein: SCN11A

Concentration: 1mg/ml

Form: Liquid

Host: Rabbit

Clonality: Polyclonal

Isotype: IgG

Applications: IHC-P (1:100-500), IHC-F (1:100-500), IF (1:100-500)

Reactivity: Rat (predicted:Human, Mouse, Rabbit, Pig, Cow, Chicken, Dog, Horse)

Predicted MW: 197 kDa

Entrez Gene: 11280

Swiss Prot: Q9UI33

Source: KLH conjugated synthetic peptide derived from human SCN11A/NAV1.9: 651-750/1797.

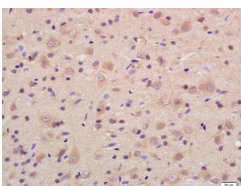
Purification: affinity purified by Protein A

Storage: 0.01M TBS (pH7.4) with 1% BSA, 0.02% Proclin300 and 50% Glycerol.

Shipped at 4°C. Store at -20°C for one year. Avoid repeated freeze/thaw cycles.

Background: Voltage gated sodium channels are membrane protein complexes that play a fundamental role in generating and transmitting action potentials in neuronal cells. SCN11A (Sodium channel, voltage gated, type XI, alpha subunit) mediates the voltage dependent sodium ion permeability and conductance. It forms the pore of the sodium selective channel through which sodium ions may pass in accordance with their electrochemical gradient. It is a tetrodotoxin resistant sodium channel isoform.

VALIDATION IMAGES



Tissue/cell: rat brain tissue; 4% Paraformaldehyde-fixed and paraffin-embedded; Antigen retrieval: citrate buffer (0.01M, pH 6.0), Boiling bathing for 15min; Block endogenous peroxidase by 3% Hydrogen peroxide for 30min; Blocking buffer (normal goat serum,C-0005) at 37°C for 20 min; Incubation: Anti-SCN11A/NAV1.9 Polyclonal Antibody, Unconjugated(bs-6684R) 1:200, overnight at 4°C, followed by conjugation to the secondary antibody(SP-0023) and DAB(C-0010) staining