

bs-6678R**[Primary Antibody]****M Cadherin Rabbit pAb****BioSS**
ANTIBODIES

www.bioss.com.cn

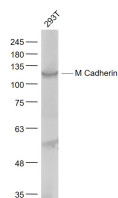
sales@bioss.com.cn

techsupport@bioss.com.cn

400-901-9800

— DATASHEET —

Host: Rabbit	Isotype: IgG	Applications: WB (1:500-2000)
Clonality: Polyclonal		Reactivity: Human (predicted: Mouse, Rat, Cow, Dog)
GeneID: 1013	SWISS: P55291	
Target: M Cadherin		Predicted MW.: 89 kDa
Immunogen: KLH conjugated synthetic peptide derived from human M-Cadherin: 355-450/814.		Subcellular Location: Cell membrane
Purification: affinity purified by Protein A		
Concentration: 1mg/ml		
Storage: 0.01M TBS (pH7.4) with 1% BSA, 0.02% Proclin300 and 50% Glycerol. Shipped at 4°C. Store at -20°C for one year. Avoid repeated freeze/thaw cycles.		
Background: Cadherins are a family of transmembrane glycoproteins that play a key role in Calcium dependent cell-cell adhesion. Several members of the cadherin family have been identified so far, including E- (epithelial), P- (placental), N- (neuronal) and M- (muscle) cadherin. Cadherins consist of an extracellular domain containing 5 cadherin domains, a transmembrane region, and a conserved cytoplasmic domain. Transcripts from this particular cadherin are expressed in myoblasts and upregulated in myotubule-forming cells. M-Cadherin is thought to be essential for the control of morphogenetic processes, specifically myogenesis, and may provide a trigger for terminal muscle cell differentiation.		

— VALIDATION IMAGES —

Sample: 293T(Human) Cell Lysate at 30 ug
Primary: Anti- M Cadherin (bs-6678R) at 1/1000
dilution Secondary: IRDye800CW Goat Anti-
Rabbit IgG at 1/20000 dilution Predicted band
size: 89 kD Observed band size: 110 kD