

**bs-5846R****[ Primary Antibody ]****ADAM11 Rabbit pAb****BioSS**  
**ANTIBODIES**

www.bioss.com.cn

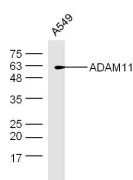
sales@bioss.com.cn

techsupport@bioss.com.cn

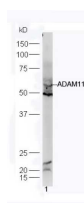
400-901-9800

**— DATASHEET —**

<b>Host:</b> Rabbit	<b>Isotype:</b> IgG	<b>Applications:</b> WB (1:500-2000)
<b>Clonality:</b> Polyclonal		<b>Reactivity:</b> Human, Mouse (predicted: Rat, Sheep, Cow)
<b>GeneID:</b> 4185	<b>SWISS:</b> O75078	<b>Predicted MW.:</b> 60 kDa
<b>Target:</b> ADAM11		<b>Subcellular Location:</b> Cell membrane
<b>Immunogen:</b> KLH conjugated synthetic peptide derived from human ADAM11: 351-450/769.		
<b>Purification:</b> affinity purified by Protein A		
<b>Concentration:</b> 1mg/ml		
<b>Storage:</b> 0.01M TBS (pH7.4) with 1% BSA, 0.02% Proclin300 and 50% Glycerol. Shipped at 4°C. Store at -20°C for one year. Avoid repeated freeze/thaw cycles.		
<b>Background:</b> This gene encodes a member of the ADAM (a disintegrin and metalloprotease) protein family. Members of this family are membrane-anchored proteins structurally related to snake venom disintegrins, and have been implicated in a variety of biological processes involving cell-cell and cell-matrix interactions, including fertilization, muscle development, and neurogenesis. This gene represents a candidate tumor suppressor gene for human breast cancer based on its location within a minimal region of chromosome 17q21 previously defined by tumor deletion mapping. [provided by RefSeq, Jul 2008].		

**— VALIDATION IMAGES —**

Sample: A549 Cell (Human) Lysate at 40 ug  
Primary: Anti-ADAM11 (bs-5846R) at 1/300  
dilution Secondary: IRDye800CW Goat Anti-  
Rabbit IgG at 1/20000 dilution Predicted band  
size: 60 kD Observed band size: 60 kD



Sample: brain (Mouse) Lysate at 40 ug Primary:  
Anti-ADAM11 (bs-5846R) at 1/300 dilution  
Secondary: IRDye800CW Goat Anti-Rabbit IgG at  
1/20000 dilution Predicted band size: 60 kD  
Observed band size: 60 kD