

alpha Internexin Rabbit pAb

Catalog Number: bs-2408R

Target Protein: alpha Internexin

Concentration: 1mg/ml

Form: Liquid

Host: Rabbit

Clonality: Polyclonal

Isotype: IgG

Applications: WB (1:500-2000)

Reactivity: Human (predicted:Mouse, Rat, Pig, Cow, Dog, Horse)

Predicted MW: 55 kDa

Entrez Gene: 9118

Swiss Prot: Q16352

Source: KLH conjugated synthetic peptide derived from human NF-66: 251-350/499.

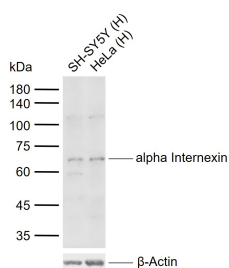
Purification: affinity purified by Protein A

Storage: 0.01M TBS (pH7.4) with 1% BSA, 0.02% Proclin300 and 50% Glycerol.

Shipped at 4°C. Store at -20°C for one year. Avoid repeated freeze/thaw cycles.

Background: eurofilaments are type IV intermediate filament heteropolymers composed of light, medium, and heavy chains. Neurofilaments comprise the axoskeleton and they functionally maintain the neuronal caliber. They may also play a role in intracellular transport to axons and dendrites. This gene is a member of the intermediate filament family and is involved in the morphogenesis of neurons. [provided by RefSeq, Jun 2009]

VALIDATION IMAGES



Sample: Lane 1: Human SH-SY5Y cell lysates Lane 2: Human HeLa cell lysates Primary: Anti-alpha Internexin (bs-2408R) at 1/1000 dilution Secondary: IRDye800CW Goat Anti-Rabbit IgG at 1/20000 dilution Predicted band size: 55 kDa Observed band size: 64 kDa