

**bs-20272R****[ Primary Antibody ]****ADCY3 Rabbit pAb****Bioss**  
**ANTIBODIES**

www.bioss.com.cn

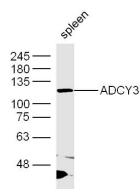
sales@bioss.com.cn

techsupport@bioss.com.cn

400-901-9800

**— DATASHEET —**

|  |                      |  |
|--|----------------------|--|
| <b>Host:</b> Rabbit  | <b>Isotype:</b> IgG  | <b>Applications:</b> WB (1:500-2000)                                     |
| <b>Clonality:</b> Polyclonal   |                      | <b>Reactivity:</b> Mouse (predicted: Human, Rat, Pig, Sheep, Cow, Horse) |
| <b>GeneID:</b> 109   | <b>SWISS:</b> O60266 | <b>Predicted MW.:</b> 126 kDa  |
| <b>Target:</b> ADCY3   |                      | <b>Subcellular Location:</b> Cell membrane                               |
| <b>Immunogen:</b> KLH conjugated synthetic peptide derived from human ADCY3: 651-750/1144.   |                      |  |
| <b>Purification:</b> affinity purified by Protein A  |                      |  |
| <b>Concentration:</b> 1mg/ml   |                      |  |
| <b>Storage:</b> Preservative: 0.02% Proclin300, Constituents: 1% BSA, 0.01M PBS, pH7.4.<br>Shipped at 4°C. Store at -20°C for one year. Avoid repeated freeze/thaw cycles.   |                      |  |
| <b>Background:</b> The cAMP synthesizing enzymes are found in two forms: cytosolic (soluble) and membrane-bound (particulate). Stimulation of adenylate cyclases produce cAMP from ATP in response to the activation of GPCRs by various hormones, neurotransmitters and other regulatory molecules. cAMP, in subsequent steps down the signal transduction pathway, can stimulate cAMP-dependent protein kinase A (cPKA), and several other target molecules. Activation of cPKA can phosphorylate a broad range of substrates that regulate various metabolic pathways, gene expression, and affect memory functions etc. The stimulation of adenylate cyclases starts with interactions with GPCRs mediated signals initiated by Gs and Gi heterotrimeric G-proteins. |                      |  |

**— VALIDATION IMAGES —**

Sample:spleen (mouse) Lysate at 40 ug Primary:

Anti-ADCY3(bs-20272R)at 1/300 dilution

Secondary: IRDye800CW Goat Anti-Rabbit IgG at

1/20000 dilution Predicted band size: 126kD

Observed band size: 126kD