

bs-19846R**[Primary Antibody]****BioSS**
ANTIBODIES

www.bioss.com.cn

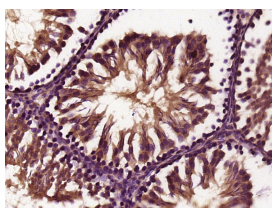
sales@bioss.com.cn

techsupport@bioss.com.cn

400-901-9800

RTL9 Rabbit pAb**— DATASHEET —**

Host: Rabbit	Isotype: IgG	Applications: IHC-P (1:100-500) IHC-F (1:100-500) IF (1:100-500) Reactivity: Rat (predicted: Human, Mouse, Rabbit, Pig, Sheep, Cow, Dog, Horse) Predicted MW.: 144 kDa Subcellular Location: Nucleus
Clonality: Polyclonal		
GeneID: 57529	SWISS: Q8NET4	
Target: RTL9		
Immunogen: KLH conjugated synthetic peptide derived from human RTL9: 1251-1350/1388.		
Purification: affinity purified by Protein A		
Concentration: 1mg/ml		
Storage: 0.01M TBS (pH7.4) with 1% BSA, 0.02% Proclin300 and 50% Glycerol. Shipped at 4°C. Store at -20°C for one year. Avoid repeated freeze/thaw cycles.		
Background: RTL9 (Retrotransposon Gag Like 9) is a Protein Coding gene. Diseases associated with RTL9 include Amme Complex and Embryonal Testis Carcinoma. An important paralog of this gene is MUC4.		

— VALIDATION IMAGES —

Paraformaldehyde-fixed, paraffin embedded (rat testis tissue); Antigen retrieval by boiling in sodium citrate buffer (pH6.0) for 15min; Block endogenous peroxidase by 3% hydrogen peroxide for 20 minutes; Blocking buffer (normal goat serum) at 37°C for 30min; Antibody incubation with (RGAG1) Polyclonal Antibody, Unconjugated (bs-19846R) at 1:400 overnight at 4°C, followed by operating according to SP Kit(Rabbit) (sp-0023) instructions and DAB staining.