

bs-19845R

[Primary Antibody]

RG9MTD3 Rabbit pAb

BioSS
ANTIBODIES

www.bioss.com.cn

sales@bioss.com.cn

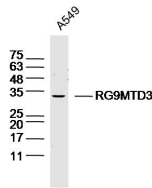
techsupport@bioss.com.cn

400-901-9800

— DATASHEET —

Host: Rabbit	Isotype: IgG	Applications: WB (1:500-2000) Reactivity: Human (predicted: Mouse, Rat, Rabbit, Pig, Cow, Dog, Cat, Horse) Predicted MW.: 36 kDa Subcellular Location: Nucleus
Clonality: Polyclonal		
GeneID: 158234	SWISS: Q6PF06	
Target: RG9MTD3		
Immunogen: KLH conjugated synthetic peptide derived from human RG9MTD3: 101-200/316.		
Purification: affinity purified by Protein A		
Concentration: 1mg/ml		
Storage: 0.01M TBS (pH7.4) with 1% BSA, 0.02% Proclin300 and 50% Glycerol. Shipped at 4°C. Store at -20°C for one year. Avoid repeated freeze/thaw cycles.		

— VALIDATION IMAGES —



Sample: A549 Cell (Human) Lysate at 30 ug
Primary: Anti- RG9MTD3 (bs-19845R) at 1/300 dilution
Secondary: IRDye800CW Goat Anti-Rabbit IgG at 1/20000 dilution
Predicted band size: 36kD
Observed band size: 34kD