

**bs-12593R****[ Primary Antibody ]****CRTR1 Rabbit pAb****BioSS**  
**ANTIBODIES**

www.bioss.com.cn

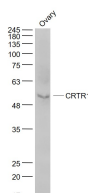
sales@bioss.com.cn

techsupport@bioss.com.cn

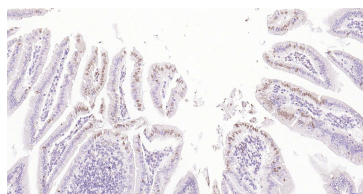
400-901-9800

**— DATASHEET —****Host:** Rabbit**Isotype:** IgG**Clonality:** Polyclonal**GeneID:** 29842**SWISS:** Q9NZI6**Target:** CRTR1**Immunogen:** KLH conjugated synthetic peptide derived from human CRTR1: 181-280/479.**Purification:** affinity purified by Protein A**Concentration:** 1mg/ml**Storage:** 0.01M TBS (pH7.4) with 1% BSA, 0.02% Proclin300 and 50% Glycerol.

Shipped at 4°C. Store at -20°C for one year. Avoid repeated freeze/thaw cycles.

**Background:** The long terminal repeat binding protein-1 (LBP-1) mammalian family of transcription factors are proteins that stimulate transcription in HeLa cells from the major late promoter of simian virus 40 in vitro. The two related human LBP-1 genes are TFCEP2A, which encodes the alternatively spliced transcripts LBP-1a and LBP-1b, and TFCEP2C, which encodes LBP-1c and LBP-1d. LBP-9, also designated transcription factor CP2-like 1 (TFCEP2L1), is a protein of 479 amino acids. LBP-9 shows 83% sequence homology with LBP-1b and acts as a suppressor factor inhibiting the stimulation effect of LBP-1b. LBP-9 may regulate the P450scc reporter activity through the -155/-131 element.**Applications:** WB (1:500-2000)**IHC-P** (1:100-500)**IHC-F** (1:100-500)**IF** (1:100-500)**Reactivity:** Human, Mouse, Rat  
(predicted: Cow, Chicken, Dog, Horse)**Predicted MW.:** 55 kDa**Subcellular Location:** Nucleus**— VALIDATION IMAGES —**

Sample: Ovary (Mouse) Lysate at 40 ug Primary:  
Anti- CRTR1 (bs-12593R) at 1/1000 dilution  
Secondary: IRDye800CW Goat Anti-Rabbit IgG at  
1/20000 dilution Predicted band size: 55 kD  
Observed band size: 55 kD



Paraformaldehyde-fixed, paraffin embedded  
Mouse Duodenum; Antigen retrieval by boiling in  
sodium citrate buffer (pH6.0) for 15 min;  
Antibody incubation with CRTR1 Polyclonal  
Antibody, Unconjugated (bs-12593R) at 1:200  
overnight at 4°C, followed by conjugation to the  
SP Kit (Rabbit, SP-0023) and DAB (C-0010)  
staining.



Paraformaldehyde-fixed, paraffin embedded  
Mouse Liver; Antigen retrieval by boiling in  
sodium citrate buffer (pH6.0) for 15 min;  
Antibody incubation with CRTR1 Polyclonal  
Antibody, Unconjugated (bs-12593R) at 1:200  
overnight at 4°C, followed by conjugation to the  
SP Kit (Rabbit, SP-0023) and DAB (C-0010)  
staining.