

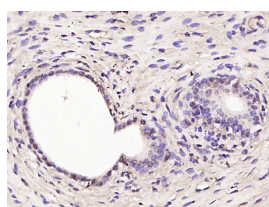
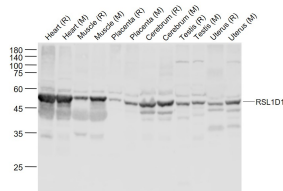
bs-22952R**[Primary Antibody]****BioSS**
ANTIBODIES

www.bioss.com.cn

sales@bioss.com.cn

techsupport@bioss.com.cn

400-901-9800

RSL1D1 Rabbit pAb**— DATASHEET —****Host:** Rabbit**Isotype:** IgG**Clonality:** Polyclonal**Target:** RSL1D1**Immunogen:** KLH conjugated synthetic peptide derived from mouse RSL1D1: 311-410/452.**Purification:** affinity purified by Protein A**Concentration:** 1mg/ml**Storage:** 0.01M TBS (pH7.4) with 1% BSA, 0.02% Proclin300 and 50% Glycerol.
Shipped at 4°C. Store at -20°C for one year. Avoid repeated freeze/thaw cycles.**Background:** RSL1D1, also known as CATX-11, PBK1, L12 or CSIG, is a 490 amino acid nuclear protein that belongs to the ribosomal protein L1P family. Expressed in placenta, RSL1D1 contains many phosphorylated amino acid residues and is encoded by a gene that maps to human chromosome 16p13.13. Chromosome 16 encodes over 900 genes in approximately 90 million base pairs, makes up nearly 3% of human cellular DNA and is associated with a variety of genetic disorders. The GAN gene is located on chromosome 16 and, with mutation, may lead to giant axonal neuropathy, a nervous system disorder characterized by increasing malfunction with growth. The rare disorder Rubinstein-Taybi syndrome is also associated with chromosome 16, though through the CREBBP gene which encodes a critical CREB binding protein. Signs of Rubinstein-Taybi include mental retardation and predisposition to tumor growth and white blood cell neoplasias.**Applications:** **WB** (1:500-2000)
IHC-P (1:400-800)
IHC-F (1:400-800)
IF (1:100-500)**Reactivity:** Mouse, Rat**Predicted MW.:** 55 kDa**Subcellular Location:** Nucleus**— VALIDATION IMAGES —**

Sample: Lane 1: Heart (Rat) Lysate at 40 ug Lane 2: Heart (Mouse) Lysate at 40 ug Lane 3: Muscle (Rat) Lysate at 40 ug Lane 4: Muscle (Mouse) Lysate at 40 ug Lane 5: Placenta (Rat) Lysate at 40 ug Lane 6: Placenta (Mouse) Lysate at 40 ug Lane 7: Cerebrum (Rat) Lysate at 40 ug Lane 8: Cerebrum (Mouse) Lysate at 40 ug Lane 9: Testis (Rat) Lysate at 40 ug Lane 10: Testis (Mouse) Lysate at 40 ug Lane 11: Uterus (Rat) Lysate at 40 ug Lane 12: Uterus (Mouse) Lysate at 40 ug
 Primary: Anti-RSL1D1 (bs-22952R) at 1/1000 dilution Secondary: IRDye800CW Goat Anti-Rabbit IgG at 1/20000 dilution Predicted band size: 55 kD Observed band size: 52 kD

Paraformaldehyde-fixed, paraffin embedded (rat uterus); Antigen retrieval by boiling in sodium citrate buffer (pH6.0) for 15min; Block endogenous peroxidase by 3% hydrogen peroxide for 20 minutes; Blocking buffer (normal goat serum) at 37°C for 30min; Antibody incubation with (RSL1D1) Polyclonal Antibody, Unconjugated (bs-22952R) at 1:200 overnight at 4°C, followed by operating according to SP Kit(Rabbit) (sp-0023) instructions and DAB staining.