

bs-7345R**[Primary Antibody]****Bioss**
ANTIBODIES

www.bioss.com.cn

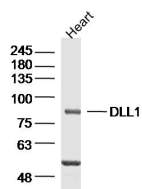
sales@bioss.com.cn

techsupport@bioss.com.cn

400-901-9800

DLL1 Rabbit pAb**— DATASHEET —**

Host: Rabbit	Isotype: IgG	Applications: WB (1:500-2000)
Clonality: Polyclonal		Reactivity: Mouse (predicted: Human, Rat, Cow, Chicken)
GeneID: 28514	SWISS: O00548	
Target: DLL1		Predicted MW.: 76 kDa
Immunogen: KLH conjugated synthetic peptide derived from human DLL1: 1-100/723. < Extracellular >		Subcellular Location: Cell membrane
Purification: affinity purified by Protein A		
Concentration: 1mg/ml		
Storage: 0.01M TBS (pH7.4) with 1% BSA, 0.02% Proclin300 and 50% Glycerol. Shipped at 4°C. Store at -20°C for one year. Avoid repeated freeze/thaw cycles.		
Background: The LIN-12/Notch family of transmembrane receptors is believed to play a central role in development by regulating cell fate decisions. Notch proteins have been found to be overexpressed or rearranged in human tumors. Ligands for Notch include Jagged, Jagged-2 and Delta. While blocking the differentiation of progenitor cells into the B cell lineage, Delta promotes the emergence of a population of cells with T cell/NK-cell characteristics. Delta is a membrane protein expressed in heart, pancreas, brain and muscle during gastrulation and early organogenesis, and in adult heart and lung.		

— VALIDATION IMAGES —

Sample: Heart (Mouse) Lysate at 40 ug
Primary: Anti-DLL1(bs-7345R) at 1/300 dilution
Secondary: IRDye800CW Goat Anti-Rabbit IgG at 1/20000 dilution
Predicted band size: 76kD
Observed band size: 81kD