

bs-1382R**[Primary Antibody]**

Bioss
ANTIBODIES

www.bioss.com.cn

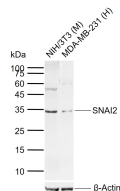
sales@bioss.com.cn

techsupport@bioss.com.cn

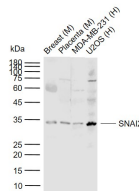
400-901-9800

SNAI2 Rabbit pAb**DATASHEET**

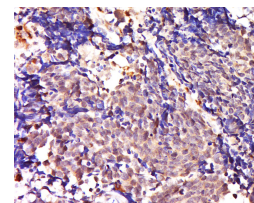
Host: Rabbit	Isotype: IgG	Applications: WB (1:500-2000) IHC-P (1:100-500) IHC-F (1:100-500) IF (1:100-500) Flow-Cyt (1ug/Test)
Clonality: Polyclonal		
GeneID: 6591	SWISS: O43623	
Target: SNAI2		
Immunogen: KLH conjugated synthetic peptide derived from human Slug: 5-120/268.		
Purification: affinity purified by Protein A		Reactivity: Human, Mouse (predicted: Rat, Rabbit, Pig, Cow, Chicken, Dog)
Concentration: 1mg/ml		
Storage: 0.01M TBS (pH7.4) with 1% BSA, 0.02% Proclin300 and 50% Glycerol. Shipped at 4°C. Store at -20°C for one year. Avoid repeated freeze/thaw cycles.		
Background: Component of cohesin complex, a complex required for the cohesion of sister chromatids after DNA replication. The cohesin complex apparently forms a large proteinaceous ring within which sister chromatids can be trapped. At anaphase, the complex is cleaved and dissociates from chromatin, allowing sister chromatids to segregate. The cohesin complex may also play a role in spindle pole assembly during mitosis.		
		Predicted MW.: 30 kDa Subcellular Location: Nucleus

VALIDATION IMAGES

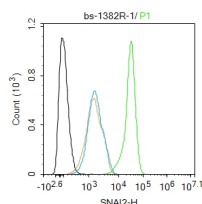
Sample: Lane 1: Mouse NIH/3T3 cell lysates Lane 2: Human MDA-MB-231 cell lysates Primary: Anti-SNAI2 (bs-1382R) at 1/500 dilution Secondary: IRDye800CW Goat Anti-Rabbit IgG at 1/20000 dilution Predicted band size: 30 kDa Observed band size: 34 kDa



Sample: Lane 1: Mouse Breast tissue lysates Lane 2: Mouse Placenta tissue lysates Lane 3: Human MDA-MB-231 cell lysates Lane 4: Human U2OS cell lysates Primary: Anti-SNAI2 (bs-1382R) at 1/1000 dilution Secondary: IRDye800CW Goat Anti-Rabbit IgG at 1/20000 dilution Predicted band size: 30 kDa Observed band size: 34 kDa



Tissue/cell: human lung carcinoma; 4% Paraformaldehyde-fixed and paraffin-embedded; Antigen retrieval: citrate buffer (0.01M, pH 6.0), Boiling bathing for 15min; Block endogenous peroxidase by 3% Hydrogen peroxide for 30min; Blocking buffer (normal goat serum, C-0005) at 37°C for 20 min; Incubation: Anti-SNAI2 Polyclonal Antibody, Unconjugated(bs-1382R) 1:500, overnight at 4°C, followed by conjugation to the secondary antibody(SP-0023) and DAB(C-0010) staining



Blank control (black line) :HepG2. Primary Antibody (green line): Rabbit Anti-SNAI2 antibody (bs-1382R) Dilution:1ug/Test; Secondary Antibody (white blue line) : Goat anti-rabbit IgG-AF488 Dilution: 0.5ug/Test. Isotype control (orange line) : Normal Rabbit IgG Protocol The cells were fixed with 4% PFA

Important Note: This product as supplied is intended for research use only, not for use in human, therapeutic or diagnostic applications.

(10min at room temperature)and then permeabilized with 90% ice-cold methanol for 20 min at -20°C, The cells were then incubated in 5%BSA to block non-specific protein-protein interactions for 30 min at room temperature .Cells stained with Primary Antibody for 30 min at room temperature. The secondary antibody used for 40 min at room temperature. Acquisition of 20,000 events was performed.

— SELECTED CITATIONS —

- **[IF=6]** Jie Chen. et al. Quercetin ameliorates liver fibrosis in Wilson disease and EMT involving suppression of the Hedgehog signaling pathway. ARAB J CHEM. 2024 Jan;17:105487 WB ;Mouse,Human. 10.1016/j.arabjc.2023.105487
- **[IF=5.02]** Bai, J. W., et al. "The zinc-finger transcriptional factor Slug transcriptionally downregulates ER α by recruiting lysine-specific demethylase 1 in human breast cancer." Oncogenesis 6.5 (2017): e330. IHC ;="Human". 28481366
- **[IF=4.254]** Zhou K et al. RAC1-GTP promotes epithelial-mesenchymal transition and invasion of colorectal cancer by activation of STAT3.Lab Invest. 2018 Aug;98(8):989-998. IHC ;Human. 29884911
- **[IF=4.137]** Huang T et al. Schwann Cell-Derived CCL2 Promotes the Perineural Invasion of Cervical Cancer. Front Oncol. 2020 Jan 29;10:19. IHC ;Human. 32064233
- **[IF=3.02]** Kong, Lingxin, et al. "Overexpression of SDF-1 activates the NF- κ B pathway to induce epithelial to mesenchymal transition and cancer stem cell-like phenotypes of breast cancer cells." International Journal of Oncology. Other ;="Human". 26782945