

bs-1363R**[Primary Antibody]****BioSS**
ANTIBODIES

www.bioss.com.cn

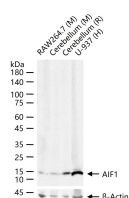
sales@bioss.com.cn

techsupport@bioss.com.cn

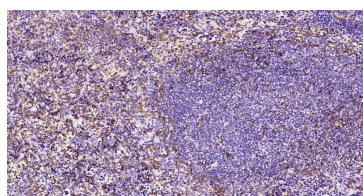
400-901-9800

AIF1 / Iba1 Rabbit pAb**— DATASHEET —**

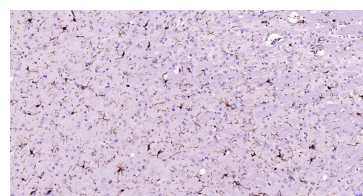
Host: Rabbit	Isotype: IgG	Applications: WB (1:500-1000)
Clonality: Polyclonal		IHC-P (1:50-200)
GeneID: 199	SWISS: P55008	IHC-F (1:50-200)
Target: AIF1 / Iba1		IF (1:50-200)
Immunogen: KLH conjugated synthetic peptide derived from human Iba1: 51-147/147.		Reactivity: Human, Mouse, Rat
Purification: affinity purified by Protein A		
Concentration: 1mg/ml		Predicted MW.: 16 kDa
Storage: 0.01M TBS (pH7.4) with 1% BSA, 0.02% Proclin300 and 50% Glycerol. Shipped at 4°C. Store at -20°C for one year. Avoid repeated freeze/thaw cycles.		Subcellular Location: Cell membrane ,Cytoplasm
Background: Allograft Inflammatory Factor-1 (AIF1) or ionized calcium-binding adaptor molecule 1 (Iba1) is expressed selectively in microglia/macrophages and is a Ca ²⁺ -binding peptide produced by activated monocytes and microglial cells. It has been suggested that AIF1 expression is associated with chronic inflammatory processes. AIF1 is expressed by activated monocytes and might participate in a variety of pathogenic processes in the mammalian brain and in chronic transplant rejection. It has been shown to be expressed early and persistently in chronically rejecting cardiac allografts but not in cardiac syngrafts and host hearts.		

— VALIDATION IMAGES —

25 ug total protein per lane of various lysates (see on figure) probed with AIF1 (9A3) polyclonal antibody, unconjugated (bs-1363R) at 1:1000 dilution and 4°C overnight incubation. Followed by conjugated secondary antibody incubation at r.t. for 60 min.



Paraformaldehyde-fixed, paraffin embedded Mouse Spleen; Antigen retrieval by boiling in sodium citrate buffer (pH6.0) for 15 min; Antibody incubation with AIF1 (9A3) Polyclonal Antibody, Unconjugated (bs-1363R) at 1:200 overnight at 4°C, followed by conjugation to the SP Kit (Rabbit, SP-0023) and DAB (C-0010) staining.



Paraformaldehyde-fixed, paraffin embedded Mouse Cerebrum; Antigen retrieval by boiling in sodium citrate buffer (pH6.0) for 15 min; Antibody incubation with AIF1 (9A3) Polyclonal Antibody, Unconjugated (bs-1363R) at 1:200 overnight at 4°C, followed by conjugation to the SP Kit (Rabbit, SP-0023) and DAB (C-0010) staining.

— SELECTED CITATIONS —

- **[IF=32.086]** Yuxin Liu. et al. Ferromagnetic flexible electronics for brain-wide selective neural recording. ADV MATER. 2022 Nov;;2208251 IF ;Rat. 36451587
- **[IF=10.588]** Haiyang Zhang. et al. Co-exposure of chronic stress and alumina nanoparticles aggravates hippocampal microglia pyroptosis by activating cathepsin B/NLRP3 signaling pathway. J HAZARD MATER. 2022 Aug;436:129093 IHC ;Rat. 35569374
- **[IF=10.1]** Liu Chong. et al. Targeted activation of ErbB4 receptor ameliorates neuronal deficits and neuroinflammation in a food-borne polystyrene microplastic exposed mouse model. J NEUROINFLAMM. 2025 Dec;22(1):1-20 IF ;Mouse. 40089796

Important Note: This product as supplied is intended for research use only, not for use in human, therapeutic or diagnostic applications.

- **[IF=8.8]** Shu Qing Zhang, et al. Phlorizin ameliorates cognitive and behavioral impairments via the microbiota-gut-brain axis in high-fat and high-fructose diet-induced obese male mice. BRAIN BEHAV IMMUN. 2024 Sep;; IF ;Mouse. 39277023
- **[IF=8.823]** Wang Shang, et al. Early activation of Toll-like receptor-3 reduces the pathological progression of Alzheimer' s disease in APP/PS1 mouse. ALZHEIMERS RES THER. 2023 Dec;15(1):1-17 WB ;Mouse. 36797783