

**bsm-54265R****[ Primary Antibody ]****BioSS**  
**ANTIBODIES**

www.bioss.com.cn

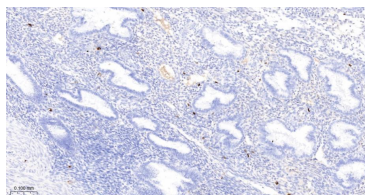
sales@bioss.com.cn

techsupport@bioss.com.cn

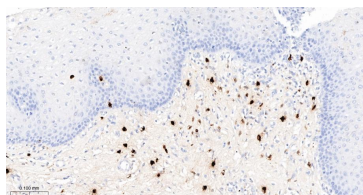
400-901-9800

**CMA1 Recombinant Rabbit mAb****— DATASHEET —**

<b>Host:</b> Rabbit	<b>Isotype:</b> IgG	<b>Applications:</b> WB (1:500-2000) IHC-P (1:100-500) IHC-F (1:100-500) IF (1:100-500)  <b>Reactivity:</b> Human   <b>Predicted MW.:</b> 25 kDa  <b>Subcellular Location:</b> Secreted ,Cytoplasm
<b>Clonality:</b> Recombinant	<b>CloneNo.:</b> R5H9	
<b>GeneID:</b> 1215	<b>SWISS:</b> P23946	
<b>Target:</b> CMA1		
<b>Immunogen:</b> A synthesized peptide derived from human Chymase: 204-247.		
<b>Purification:</b> affinity purified by Protein A		
<b>Concentration:</b> 1mg/ml		
<b>Storage:</b> 0.01M TBS (pH7.4) with 1% BSA, 0.02% Proclin300 and 50% Glycerol. Shipped at 4°C. Store at -20°C for one year. Avoid repeated freeze/thaw cycles.		
<b>Background:</b> Mast cells contain a number of preformed chemicals mediators such as histamine, chymase, carboxypeptidase and proteolytic trypsin. Human Mast Cell Chymase is considered to be an important marker of mast cells as well as an important mediator of inflammation.		

**— VALIDATION IMAGES —**

Paraformaldehyde-fixed, paraffin embedded Human Uterus; Antigen retrieval by boiling in sodium citrate buffer (pH6.0) for 15 min; The section was incubated with CMA1 Monoclonal Antibody, Unconjugated (bsm-54265R) at 1:200 overnight at 4°C, followed by conjugation to the bs-0295G-HRP and DAB (C-0010) staining.



Paraformaldehyde-fixed, paraffin embedded Human Esophagus; Antigen retrieval by boiling in sodium citrate buffer (pH6.0) for 15 min; The section was incubated with CMA1 Monoclonal Antibody, Unconjugated (bsm-54265R) at 1:200 overnight at 4°C, followed by conjugation to the bs-0295G-HRP and DAB (C-0010) staining.