

bsm-60714R**[Primary Antibody]****BioSS**
ANTIBODIES

www.bioss.com.cn

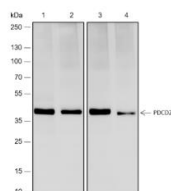
sales@bioss.com.cn

techsupport@bioss.com.cn

400-901-9800

PDCD2 Recombinant Rabbit mAb**— DATASHEET —**

Host: Rabbit	Isotype: IgG	Applications: WB (1:500-2000)
Clonality: Recombinant	CloneNo.: R5D3	
GeneID: 5134	SWISS: Q16342	
Target: PDCD2		
Purification: affinity purified by Protein A		
Concentration: 1mg/ml		
Storage: 0.01M TBS (pH7.4) with 1% BSA, 0.02% Proclin300 and 50% Glycerol. Shipped at 4°C. Store at -20°C for one year. Avoid repeated freeze/thaw cycles.		Reactivity: Human (predicted: Mouse, Rat)
Background: This gene encodes a nuclear protein expressed in a variety of tissues. Expression of this gene has been shown to be repressed by B-cell CLL/lymphoma 6 (BCL6), a transcriptional repressor required for lymph node germinal center development, suggesting that BCL6 regulates apoptosis by its effects on this protein. Alternative splicing results in multiple transcript variants and pseudogenes have been identified on chromosomes 9 and 12. [provided by RefSeq, Dec 2010]		Predicted MW.: 39 kDa
		Subcellular Location: Nucleus

— VALIDATION IMAGES —

Blocking buffer: 5% NFDM/TBST Primary Ab
dilution: 1:2000 Primary Ab incubation
condition: 2 hours at room temperature
Secondary Ab: Goat Anti-Rabbit IgG H&L (HRP)
Lysate: 1: 293T, 2: HeLa, 3: NIH/3T3, 4: BRL
Protein loading quantity: 20 µg Exposure time:
60 s Predicted MW: 39 kDa Observed MW: 39 kDa