

## Polycystin 2 Rabbit pAb

Catalog Number: bs-24450R

Target Protein: Polycystin 2

Concentration: 1mg/ml

Form: Liquid

Host: Rabbit

Clonality: Polyclonal

Isotype: IgG

Applications: WB (1:500-2000)

Reactivity: Human (predicted: Mouse, Rat, Rabbit, Pig, Cow, Zebrafish, Horse)

Predicted MW: 106 kDa

Entrez Gene: 5311

Swiss Prot: Q13563

Source: KLH conjugated synthetic peptide derived from human Polycystin 2: 41-140/968.

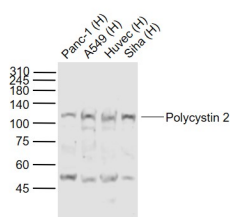
Purification: affinity purified by Protein A

Storage: 0.01M TBS (pH7.4) with 1% BSA, 0.02% Proclin300 and 50% Glycerol.

Shipped at 4°C. Store at -20°C for one year. Avoid repeated freeze/thaw cycles.

**Background:** This gene encodes a member of the polycystin protein family. The encoded protein is a multi-pass membrane protein that functions as a calcium permeable cation channel, and is involved in calcium transport and calcium signaling in renal epithelial cells. This protein interacts with polycystin 1, and they may be partners in a common signaling cascade involved in tubular morphogenesis. Mutations in this gene are associated with autosomal dominant polycystic kidney disease type 2. [provided by RefSeq, Mar 2011].

### VALIDATION IMAGES



Sample: Lane 1: Panc-1 (Human) Cell Lysate at 30 ug Lane 2: A549 (Human) Cell Lysate at 30 ug Lane 3: Huvec (Human) Cell Lysate at 30 ug Lane 4: Siha (Human) Cell Lysate at 30 ug Primary: Anti-Polycystin 2 (bs-24450R) at 1/1000 dilution Secondary: IRDye800CW Goat Anti-Rabbit IgG at 1/20000 dilution Predicted band size: 110 kD Observed band size: 110 kD