

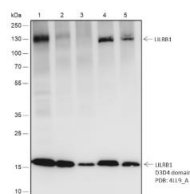
**bsm-60710R****[ Primary Antibody ]****BioSS**  
ANTIBODIES

www.bioss.com.cn

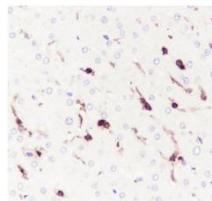
sales@bioss.com.cn

techsupport@bioss.com.cn

400-901-9800

**LILRB1 Recombinant Rabbit mAb****— DATASHEET —****Host:** Rabbit**Clonality:** Recombinant**GeneID:** 10859**Target:** LILRB1**Purification:** affinity purified by Protein A**Concentration:** 1mg/ml**Storage:** 0.01M TBS (pH7.4) with 1% BSA, 0.02% Proclin300 and 50% Glycerol.  
Shipped at 4°C. Store at -20°C for one year. Avoid repeated freeze/thaw cycles.**Background:** This gene is a member of the leukocyte immunoglobulin-like receptor (LIR) family, which is found in a gene cluster at chromosomal region 19q13.4. The encoded protein belongs to the subfamily B class of LIR receptors which contain two or four extracellular immunoglobulin domains, a transmembrane domain, and two to four cytoplasmic immunoreceptor tyrosine-based inhibitory motifs (ITIMs). The receptor is expressed on immune cells where it binds to MHC class I molecules on antigen-presenting cells and transduces a negative signal that inhibits stimulation of an immune response. It is thought to control inflammatory responses and cytotoxicity to help focus the immune response and limit autoreactivity. Multiple transcript variants encoding different isoforms have been found for this gene. [provided by RefSeq, Jul 2008]**Isotype:** IgG**CloneNo.:** R8A2**SWISS:** Q8NHL6**Applications:** **WB** (1:500-1000)**IHC-P** (1:50-200)**IHC-F** (1:50-200)**IF** (1:50-200)**ICC/IF** (1:50-200)**Reactivity:** Human (predicted: Mouse, Rat)**Predicted MW.:** 72 kDa**Subcellular Location:** Cell membrane**— VALIDATION IMAGES —**

Blocking buffer: 5% NFDM/TBST Primary Ab dilution: 1:2000 Primary Ab incubation condition: 2 hours at room temperature Secondary Ab: Goat Anti-Rabbit IgG H&L (HRP) Lysate: 1:THP-1, 2: Ramos, 3: A431, 4: Mouse brain, 5: Rat brain Protein loading quantity: 20 µg Exposure time: 60 s Predicted MW: 71 kDa Observed MW: 115, 19 kDa



Tissue: Human liver Section type: Formalin-fixed & Paraffin embedded section Retrieval method: High temperature and high pressure Retrieval buffer: Tris/EDTA buffer, pH 9.0 Primary Ab dilution: 1:500 Primary Ab incubation condition: 1 hour at room temperature Secondary Ab: Anti-Rabbit and Mouse Polymer HRP (Ready to use) Counter stain: Hematoxylin (Blue) Comment: Color brown is the positive signal for bsm-60710R