

**bsm-60707R****[ Primary Antibody ]**

www.bioss.com.cn

sales@bioss.com.cn

techsupport@bioss.com.cn

400-901-9800

**APEX1 Recombinant Rabbit mAb****DATASHEET****Host:** Rabbit**Isotype:** IgG**Clonality:** Recombinant**CloneNo.:** R2D12**GeneID:** 328**SWISS:** P27695**Target:** APEX1**Purification:** affinity purified by Protein A**Concentration:** 1mg/ml

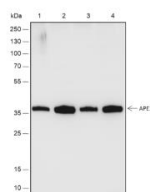
**Storage:** 0.01M TBS (pH7.4) with 1% BSA, 0.02% Proclin300 and 50% Glycerol.  
Shipped at 4°C. Store at -20°C for one year. Avoid repeated freeze/thaw cycles.

**Background:** The APEX gene encodes the major AP endonuclease in human cells. It encodes the APEX endonuclease, a DNA repair enzyme with apurinic/aprimidinic (AP) activity. Such AP activity sites occur frequently in DNA molecules by spontaneous hydrolysis, by DNA damaging agents or by DNA glycosylases that remove specific abnormal bases. The AP sites are the most frequent pre-mutagenic lesions that can prevent normal DNA replication. Splice variants have been found for this gene; all encode the same protein. Disruptions in the biological functions related to APEX are associated with many various malignancies and neurodegenerative diseases.[provided by RefSeq, Dec 2019]

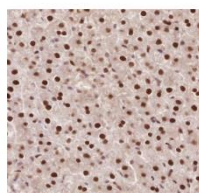
**Applications:** WB (1:1000-5000)**IHC-P** (1:100-500)**IHC-F** (1:200-500)**IF** (1:25)**Reactivity:** Human, Mouse, Rat

**Predicted**  
**MW.:** 36 kDa

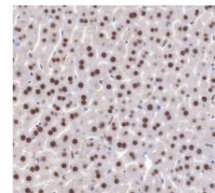
**Subcellular**  
**Location:** Cytoplasm ,Nucleus

**VALIDATION IMAGES**

Blocking buffer: 5% NFDM/TBST Primary Ab dilution: 1:5000 Primary Ab incubation condition: 2 hours at room temperature  
Secondary Ab: Goat Anti-Rabbit IgG H&L (HRP)  
Lysate: 1: HEK-293, 2: HepG2, 3: NIH/3T3, 4: RAW264.7 Protein loading quantity: 20 µg  
Exposure time: 60 s Predicted MW: 35 kDa  
Observed MW: 37 kDa



Tissue: Rat liver Section type: Formalin-fixed & Paraffin - embedded section Retrieval method: High temperature and high pressure Retrieval buffer: Tris/EDTA buffer, pH 9.0 Primary Ab dilution: 1:1000 Primary Ab incubation condition: 1 hour at room temperature  
Secondary Ab: Anti-Rabbit and Mouse Polymer HRP (Ready to use) Counter stain: Hematoxylin (Blue) Comment: Color brown is the positive signal for bsm-60707R



Tissue: Mouse liver Section type: Formalin-fixed & Paraffin - embedded section Retrieval method: High temperature and high pressure Retrieval buffer: Tris/EDTA buffer, pH 9.0 Primary Ab dilution: 1:1000 Primary Ab incubation condition: 1 hour at room temperature  
Secondary Ab: Anti-Rabbit and Mouse Polymer HRP (Ready to use) Counter stain: Hematoxylin (Blue) Comment: Color brown is the positive signal for bsm-60707R