

**bsm-33323M****[ Primary Antibody ]****BioSS**  
**ANTIBODIES**

www.bioss.com.cn

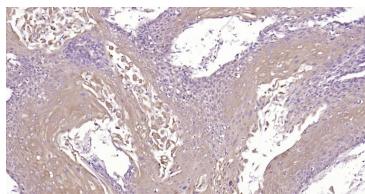
sales@bioss.com.cn

techsupport@bioss.com.cn

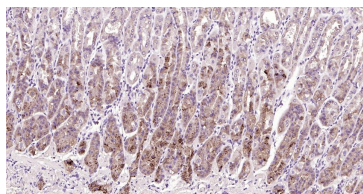
400-901-9800

**Beclin 1 Mouse mAb****— DATASHEET —**

<b>Host:</b> Mouse <b>Clonality:</b> Monoclonal <b>GeneID:</b> 8678 <b>Target:</b> Beclin 1 <b>Purification:</b> affinity purified by Protein G <b>Concentration:</b> 1mg/ml <b>Storage:</b> Size : 50ul/100ul/200ul 0.01M TBS (pH7.4) with 1% BSA, 0.02% Proclin300 and 50% Glycerol. Size : 200ug (PBS only) 0.01M PBS Shipped at 4°C. Store at -20°C for one year. Avoid repeated freeze/thaw cycles. <b>Background:</b> Beclin 1 is the first identified mammalian gene to mediate autophagy and also has tumor suppressor and antiviral function. Autophagy, a process of bulk protein degradation through an autophagosomal lysosomal pathway, is important for differentiation, survival during nutrient deprivation, and normal growth control, and is often defective in tumor cells. Beclin 1 was originally isolated in a yeast two hybrid screen to identify Bcl 2 binding partners and maps to a tumor susceptibility locus on human chromosome 17q21 that is frequently monoallelically deleted in human breast, ovarian and prostate cancer. Beclin 1 encodes an evolutionarily conserved 52kDa coiled coil protein that is expressed in human muscle, epithelial cells and neurons.	<b>Isotype:</b> IgG <b>CloneNo.:</b> 7B12 <b>SWISS:</b> Q14457	<b>Applications:</b> IHC-P (1:100-500) IHC-F (1:100-500) IF (1:100-500) <b>Reactivity:</b> Human, Mouse, Rat  <b>Predicted MW.:</b> 50 kDa <b>Subcellular Location:</b> Cell membrane ,Cytoplasm
--	--	--

**— VALIDATION IMAGES —**

Paraformaldehyde-fixed, paraffin embedded Human Cervical Cancer; Antigen retrieval by boiling in sodium citrate buffer (pH6.0) for 15 min; Antibody incubation with Beclin 1 Monoclonal Antibody, Unconjugated (ascites of bsm-33323M) at 1:200 overnight at 4°C, followed by conjugation to the bs-40296G-HRP and DAB (C-0010) staining.



Paraformaldehyde-fixed, paraffin embedded Human Fundus; Antigen retrieval by boiling in sodium citrate buffer (pH6.0) for 15 min; Antibody incubation with Beclin 1 Monoclonal Antibody, Unconjugated (ascites of bsm-33323M) at 1:200 overnight at 4°C, followed by conjugation to the bs-40296G-HRP and DAB (C-0010) staining.

**— SELECTED CITATIONS —**

- **[IF=13.3]** Ze-Min Li. et al. Bunyavirus SFTSV NSs utilizes autophagy to escape the antiviral innate immune response. AUTOPHAGY. 2024 五月 18 IP, WB, Co-IP ; Human. 38762760
- **[IF=8.469]** Mao, Shaowei. et al. FKBP51 promotes invasion and migration by increasing the autophagic degradation of TIMP3 in clear cell renal cell carcinoma. Cell Death Dis. 2021 Oct;12(10):1-15 IF ; Human. 34599146
- **[IF=5.988]** Zhao-Jie Ji. et al. Neuroprotective Effect of Taohong Siwu Decoction on Cerebral Ischemia/Reperfusion Injury via Mitophagy-NLRP3 Inflammasome Pathway. FRONT PHARMACOL. 2022; 13: 910217 IF ; Rat. 35754465

Important Note: This product as supplied is intended for research use only, not for use in human, therapeutic or diagnostic applications.

- **[IF=5.4]** Xiaoxiao Shan. et al. Kai-Xin-San ameliorates Alzheimer's disease-related neuropathology and cognitive impairment in APP/PS1 mice via the mitochondrial autophagy-NLRP3 inflammasome pathway. J ETHNOPHARMACOL. 2024 Apr;;118145 WB ;Mouse. 38582153
- **[IF=4.8]** Wenzhou Wang. et al. Transforming growth factor- $\beta$ 3/Smad2/Smad3 Signaling Pathway Inhibition and Autophagy by the Yunpi-Xiefei-Huatan Decoction Ameliorated Airway Inflammation and Mucus Hypersecretion in Asthmatic Rats. J ETHNOPHARMACOL. 2024 Nov;;119125 WB ;Rat. 39581284